

Product datasheet for **TP307880**

CYRIA (NM_030797) Human Recombinant Protein

Product data:

Product Type:	Recombinant Proteins
Description:	Recombinant protein of human family with sequence similarity 49, member A (FAM49A), 20 µg
Species:	Human
Expression Host:	HEK293T
Expression cDNA Clone or AA Sequence:	>RC207880 protein sequence Red =Cloning site Green =Tags(s)

MGNLLKVLTREIENYPHFFLDFENAQPTEGEREIWNQISAVLQDSEILADLQAYKGAGPEIRDAIQNPN
DIQLQEKAWNVAVCLVRLKRFYEFYSIRLEKALQSLLESITCPPYTPTQHLEREQALAKEFAEILHFTLR
FDELKMRNPAIQNDFSYRRTISRNRINNMHLDIENEVNNEMANRMSLFYAEATPMLKTLNATMHFVSE
NKTLPIENTTDCLSTMTSVCKVMLETPEYRSRFTSEETLMFCMRVMVGVILYDHPVPGAFCKTSKIDM
KGCIKVLKEQAPDSVEGLLNALRFTTKHLNDESTSKQIRAMLQ

TRTRPLEQKLISEEDLAANDILDYKDDDDKV

Tag:	C-Myc/DDK
Predicted MW:	37.1 kDa
Concentration:	>0.05 µg/µL as determined by microplate BCA method
Purity:	> 80% as determined by SDS-PAGE and Coomassie blue staining
Buffer:	25 mM Tris-HCl, 100 mM glycine, pH 7.3, 10% glycerol
Preparation:	Recombinant protein was captured through anti-DDK affinity column followed by conventional chromatography steps.
Note:	For testing in cell culture applications, please filter before use. Note that you may experience some loss of protein during the filtration process.
Storage:	Store at -80°C.
Stability:	Stable for 12 months from the date of receipt of the product under proper storage and handling conditions. Avoid repeated freeze-thaw cycles.
RefSeq:	NP_110424
Locus ID:	81553



[View online »](#)

UniProt ID: [Q9H0Q0](#)

RefSeq Size: 4702

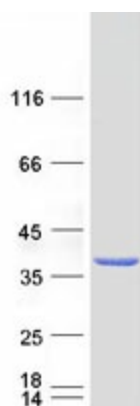
Cytogenetics: 2p24.2

RefSeq ORF: 969

Synonyms: CYRI-A; FAM49A

Summary: May negatively regulate RAC1 signaling and RAC1-driven cytoskeletal remodeling (Probable). May regulate chemotaxis, cell migration and epithelial polarization by controlling the polarity, plasticity, duration and extent of protrusions (Probable).[UniProtKB/Swiss-Prot Function]

Product images:



Coomassie blue staining of purified FAM49A protein (Cat# TP307880). The protein was produced from HEK293T cells transfected with FAM49A cDNA clone (Cat# [RC207880]) using MegaTran 2.0 (Cat# [TT210002]).