

Product datasheet for **TP307867M**

MBLAC2 (NM_203406) Human Recombinant Protein

Product data:

Product Type: Recombinant Proteins

Description: Recombinant protein of human beta-lactamase-like (LOC153364), 100 µg

Species: Human

Expression Host: HEK293T

**Expression cDNA Clone
or AA Sequence:** >RC207867 protein sequence
Red=Cloning site **Green**=Tags(s)

MSALEWYAHKSLGDIQFWIQRFYESGNRANIWLVRGSEQDVVIDTGLGLRSLPEYLYSSGLLQDREAKE
DAARRPLLAVATHVHFDHSGGLYQFDRVAVHHAEEALARGDNFETVTWLSDEVWRAPSPGWRARQFRV
QAVQPTLILQDGDVINLGDRLTVMHMPGHSRGSICLHDKDRKILFSGDVYDGLIDWLPYSRISDYVG
TCERLIELVDRGLVEKVLPGHFNTFGAERLFRSLASNYISKAGICHKVSTFAMRSLASLALRVNTSRTSP

TRTRPLEQKLISEEDLAANDILDYKDDDDKV

Tag: C-Myc/DDK

Predicted MW: 31.2 kDa

Concentration: >0.05 µg/µL as determined by microplate BCA method

Purity: > 80% as determined by SDS-PAGE and Coomassie blue staining

Buffer: 25 mM Tris-HCl, 100 mM glycine, pH 7.3, 10% glycerol

Preparation: Recombinant protein was captured through anti-DDK affinity column followed by conventional chromatography steps.

Note: For testing in cell culture applications, please filter before use. Note that you may experience some loss of protein during the filtration process.

Storage: Store at -80°C.

Stability: Stable for 12 months from the date of receipt of the product under proper storage and handling conditions. Avoid repeated freeze-thaw cycles.

RefSeq: [NP_981951](#)

Locus ID: 153364

UniProt ID: [Q68D91](#), [B3KY36](#)



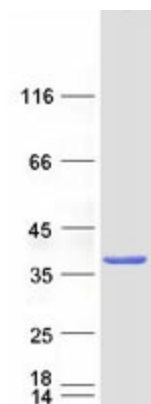
[View online »](#)

RefSeq Size: 4300

Cytogenetics: 5q14.3

RefSeq ORF: 837

Product images:



Coomassie blue staining of purified MBLAC2 protein (Cat# [TP307867]). The protein was produced from HEK293T cells transfected with MBLAC2 cDNA clone (Cat# [RC207867]) using MegaTran 2.0 (Cat# [TT210002]).