

## Product datasheet for **TP307867L**

### **MBLAC2 (NM\_203406) Human Recombinant Protein**

#### **Product data:**

**Product Type:** Recombinant Proteins

**Description:** Recombinant protein of human beta-lactamase-like (LOC153364), 1 mg

**Species:** Human

**Expression Host:** HEK293T

**Expression cDNA Clone  
or AA Sequence:** >RC207867 protein sequence  
**Red**=Cloning site **Green**=Tags(s)

MSALEWYAHKSLGDIQFVWQERFYESGNRANIWLVRGSEQDVVIDTGLGLRSLPEYLYSSGLLQDREAKE  
DAARRPLLAVATHVHFDHSGGLYQFDRVAVHHAEEALARGDNFETVTWLSDEVRAPSPGWRARQFRV  
QAVQPTLILQDGDVINLGDRLTVMHMPGHSRGSICLHDKDRKILFSGDVYDGLIDWLPYSRISDYVG  
TCERLIELVDRGLVEKVLPGHFNTFGAERLFRSLASNYISKAGICHKVSTFAMRSLASLALRVNTSRTSP

**TRTRPLEQKLISEEDLAANDILDYKDDDDKV**

**Tag:** C-Myc/DDK

**Predicted MW:** 31.2 kDa

**Concentration:** >0.05 µg/µL as determined by microplate BCA method

**Purity:** > 80% as determined by SDS-PAGE and Coomassie blue staining

**Buffer:** 25 mM Tris-HCl, 100 mM glycine, pH 7.3, 10% glycerol

**Preparation:** Recombinant protein was captured through anti-DDK affinity column followed by conventional chromatography steps.

**Note:** For testing in cell culture applications, please filter before use. Note that you may experience some loss of protein during the filtration process.

**Storage:** Store at -80°C.

**Stability:** Stable for 12 months from the date of receipt of the product under proper storage and handling conditions. Avoid repeated freeze-thaw cycles.

**RefSeq:** [NP\\_981951](#)

**Locus ID:** 153364

**UniProt ID:** [Q68D91](#), [B3KY36](#)



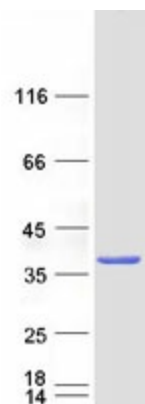
[View online >](#)

RefSeq Size: 4300

Cytogenetics: 5q14.3

RefSeq ORF: 837

### Product images:



Coomassie blue staining of purified MBLAC2 protein (Cat# [TP307867]). The protein was produced from HEK293T cells transfected with MBLAC2 cDNA clone (Cat# [RC207867]) using MegaTran 2.0 (Cat# [TT210002]).