

Product datasheet for TP307865

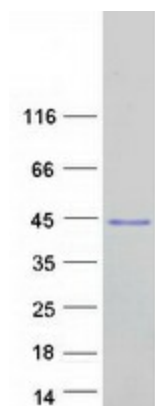
LIX1L (NM_153713) Human Recombinant Protein

Product data:

Product Type:	Recombinant Proteins
Description:	Recombinant protein of human Lix1 homolog (mouse)-like (LIX1L), 20 µg
Species:	Human
Expression Host:	HEK293T
Expression cDNA Clone or AA Sequence:	>RC207865 representing NM_153713 Red =Cloning site Green =Tags(s) METMRAQRLQPGVGTSGRGTLRALRPGVTGAAAATATPPAGPPPAPPPPAPPPPLLLSGAPGLPLPPGA AGSPAVLREAVEAVVRSFAKHTQGYGRNVVVEALQEFWQMKQSRGADLKNGALVYEMVPSNSPPYVCYV TLPGGSCFGSFQFCPTKAEARRSAKIALMNSVFNEHPSRRITDEFIEKSVSEALASFNGNREEADNPNT GIGAFRFMLESNKGKSMLEFQELMTVFQLLHWNGSLKAMRERQCSRQEVLAHYSHRALDDDIRHQMALDW VSREQSVPGALSRELAsterELDEARLAGKELRFHKEKKDILVLAAGQLGNMHSSNC TR TRPLEQKLISEEDLAANDILDYKDDDDKV
Tag:	C-Myc/DDK
Predicted MW:	36.4 kDa
Concentration:	>0.05 µg/µL as determined by microplate BCA method
Purity:	> 80% as determined by SDS-PAGE and Coomassie blue staining
Buffer:	25 mM Tris-HCl, 100 mM glycine, pH 7.3, 10% glycerol
Preparation:	Recombinant protein was captured through anti-DDK affinity column followed by conventional chromatography steps.
Note:	For testing in cell culture applications, please filter before use. Note that you may experience some loss of protein during the filtration process.
Storage:	Store at -80°C.
Stability:	Stable for 12 months from the date of receipt of the product under proper storage and handling conditions. Avoid repeated freeze-thaw cycles.
RefSeq:	<u>NP_714924</u>
Locus ID:	128077


[View online »](#)

UniProt ID: Q8IVB5
 RefSeq Size: 1467
 Cytogenetics: 1q21.1
 RefSeq ORF: 1011

Product images:


Coomassie blue staining of purified LIX1L protein (Cat# TP307865). The protein was produced from HEK293T cells transfected with LIX1L cDNA clone (Cat# [RC207865]) using MegaTran 2.0 (Cat# [TT210002]).