

Product datasheet for **TP307832L**

DCAF12L1 (NM_178470) Human Recombinant Protein

Product data:

Product Type: Recombinant Proteins

Description: Recombinant protein of human WD repeat domain 40B (WDR40B), 1 mg

Species: Human

Expression Host: HEK293T

**Expression cDNA Clone
or AA Sequence:** >RC207832 protein sequence
Red=Cloning site **Green**=Tags(s)

MAQQQTGSRKRKAPAVEAGAESSPSQGLAAADGEGPLLLKRQRRPATYRSMAYHLKVREVGGWGPARG
QG
FDGELRGYAVQRLPELLTERQLELGTVNKVFASQWLNSRQWCGTKCNTLFVVDVESGHIARIPLLRDSE
ARLAQDQQGCGIHAIELNPSKTLLATGGENPNSLAIYQLPSLDPLCLGDRHGHKDWIFAWWLSDTVAVS
GSRDGTVALWRMDPKFDDTVAWHSEVGLPVYAHIRPRDVEAIPRAIINPSNRKVRALACGGKNQELGAV
SLDGYFHLWKAGSALSRLLSIRLPYFRDNVCLTYCDDMSVYAVGSHSHVSFLDLRQDQQNIRPLCSREGG
TGVRSLSFYRHIIITVGTGQGSLFYDVRAQKFLEERASATLESSSGPARRKLRLACGRGWLNNHNDFWVNY
FGGMEVFPNALYTHCYNWPEMKLFVAGGPLPAGLHGNYAGLWS

TRTRPLEQKLISEEDLAANDILDYKDDDDKV

Tag: C-Myc/DDK

Predicted MW: 51 kDa

Concentration: >0.05 µg/µL as determined by microplate BCA method

Purity: > 80% as determined by SDS-PAGE and Coomassie blue staining

Buffer: 25 mM Tris-HCl, 100 mM glycine, pH 7.3, 10% glycerol

Preparation: Recombinant protein was captured through anti-DDK affinity column followed by conventional chromatography steps.

Note: For testing in cell culture applications, please filter before use. Note that you may experience some loss of protein during the filtration process.

Storage: Store at -80°C.

Stability: Stable for 12 months from the date of receipt of the product under proper storage and handling conditions. Avoid repeated freeze-thaw cycles.



[View online »](#)

RefSeq: [NP_848565](#)

Locus ID: 139170

UniProt ID: [Q5VU92](#)

RefSeq Size: 3403

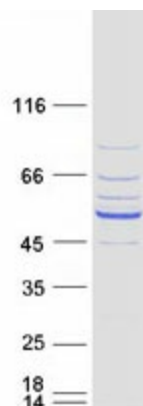
Cytogenetics: Xq25

RefSeq ORF: 1389

Synonyms: KIAA1892L; WDR40B

Summary: This gene encodes a member of the WD repeat protein family. WD repeats are minimally conserved regions of approximately 40 amino acids typically bracketed by gly-his and trp-aspartate (GH-WD), which may facilitate formation of heterotrimeric or multiprotein complexes. Members of this family are involved in a variety of cellular processes, including cell cycle progression, signal transduction, apoptosis, and gene regulation. [provided by RefSeq, Jul 2008]

Product images:



Coomassie blue staining of purified DCAF12L1 protein (Cat# [TP307832]). The protein was produced from HEK293T cells transfected with DCAF12L1 cDNA clone (Cat# [RC207832]) using MegaTran 2.0 (Cat# [TT210002]).