

Product datasheet for **TP307832**

DCAF12L1 (NM_178470) Human Recombinant Protein

Product data:

Product Type:	Recombinant Proteins
Description:	Recombinant protein of human WD repeat domain 40B (WDR40B), 20 µg
Species:	Human
Expression Host:	HEK293T
Expression cDNA	>RC207832 protein sequence
Clone or AA Sequence:	Red=Cloning site Green=Tags(s)

MAQQQTGSRKRKAPAVEAGAESSPSQGLAAADGEGPLLLKRQRRPATYRSMAYHLKVREVGGWGPRLQG
FDGELRGYAVQRLPELLTERQLELGTVNKVFASQWLNSRQVVCGTKCNTLFVVDVESGHIARIPLLRDSE
ARLAQDQQGCGIHAIELNPSKTLLATGGENPNSLAIYQLPSLDPLCLGDRHGHKDWIFAVAWLSDTVAVS
GSRDGTVALWRMDPKFDDTVAWHSEVGLPVYAHIRPRDVEAIPRAIINPSNRKVRALACGGKNQELGAV
SLDGYFHLWKAGSALSRLSIRLPYFRDNVCLTYCDDMSVYAVGSHSHVSFLDLRQDQQNIRPLCSREGG
TGVRSLSFYRHITVGTGQGSLLFYDVRAQKFLEERASATLESSSGPARRKLRLACGRGWLNHNDFWVNY
FGGMEVFPNALYTHCYNWPEMKLFVAGGPLPAGLHGNYAGLWS

TRTRPLEQKLISEEDLAANDILDYKDDDDKV

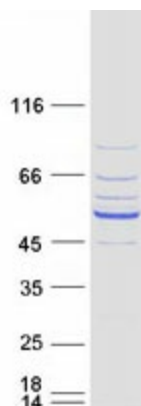
Tag:	C-Myc/DDK
Predicted MW:	51 kDa
Concentration:	>0.05 µg/µL as determined by microplate BCA method
Purity:	> 80% as determined by SDS-PAGE and Coomassie blue staining
Buffer:	25 mM Tris-HCl, 100 mM glycine, pH 7.3, 10% glycerol
Preparation:	Recombinant protein was captured through anti-DDK affinity column followed by conventional chromatography steps.
Note:	For testing in cell culture applications, please filter before use. Note that you may experience some loss of protein during the filtration process.
Storage:	Store at -80°C.
Stability:	Stable for 12 months from the date of receipt of the product under proper storage and handling conditions. Avoid repeated freeze-thaw cycles.
RefSeq:	<u>NP_848565</u>



[View online »](#)

Locus ID:	139170
UniProt ID:	Q5VU92
RefSeq Size:	3403
Cytogenetics:	Xq25
RefSeq ORF:	1389
Synonyms:	KIAA1892L; WDR40B
Summary:	This gene encodes a member of the WD repeat protein family. WD repeats are minimally conserved regions of approximately 40 amino acids typically bracketed by gly-his and trp-aspartate (GH-WD), which may facilitate formation of heterotrimeric or multiprotein complexes. Members of this family are involved in a variety of cellular processes, including cell cycle progression, signal transduction, apoptosis, and gene regulation. [provided by RefSeq, Jul 2008]

Product images:



Coomassie blue staining of purified DCAF12L1 protein (Cat# TP307832). The protein was produced from HEK293T cells transfected with DCAF12L1 cDNA clone (Cat# [RC207832]) using MegaTran 2.0 (Cat# [TT210002]).