

## Product datasheet for **TP307806M**

### REM2 (NM\_173527) Human Recombinant Protein

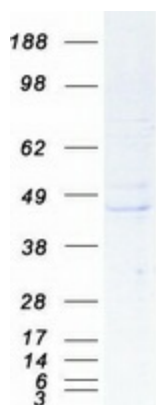
#### Product data:

Product Type:	Recombinant Proteins
Description:	Recombinant protein of human RAS (RAD and GEM)-like GTP binding 2 (REM2), 100 µg
Species:	Human
Expression Host:	HEK293T
Expression cDNA Clone or AA Sequence:	>RC207806 protein sequence <span style="color: red;">Red</span> =Cloning site <span style="color: green;">Green</span> =Tags(s)  MDTETTALCPSGSRRASPPGTPTPEADATLLKKSEKLLAELDRSGLPSAPGAPRRRGSMPPVYPKHQLRRA QAVDELDWPPQASSSGSSDSLGSGEAAPAQKDGIKVMVLVGESGVGKSTLAGTFGGLQGDSAHEPENPE D TYERRIMVDKEEVTLVYDIWEQGDAGGWL RDHCLQTGDAFLIVFSVTDRRSFSKVPETLLRLRAGRPHH DLPVILVGNKSDLARSREVSLEEGRHLAGTSLCKHIETSAALHHNTRELFEHAVRQIRLRGRNHAGGQR PDPGSPEGPAPPARRESLTKAKRFLANLVPRNAKFFKQRSRSCHDLSVL  <span style="color: red;">TR</span> <span style="color: green;">TRPLEQKLISEEDLAANDILDYKDDDDKV</span>
Tag:	C-Myc/DDK
Predicted MW:	37 kDa
Concentration:	>0.05 µg/µL as determined by microplate BCA method
Purity:	> 80% as determined by SDS-PAGE and Coomassie blue staining
Buffer:	25 mM Tris-HCl, 100 mM glycine, pH 7.3, 10% glycerol
Preparation:	Recombinant protein was captured through anti-DDK affinity column followed by conventional chromatography steps.
Note:	For testing in cell culture applications, please filter before use. Note that you may experience some loss of protein during the filtration process.
Storage:	Store at -80°C.
Stability:	Stable for 12 months from the date of receipt of the product under proper storage and handling conditions. Avoid repeated freeze-thaw cycles.
RefSeq:	<u><a href="#">NP_775798</a></u>
Locus ID:	161253


[View online »](#)

UniProt ID:	<u>Q8IYK8</u>
RefSeq Size:	1885
Cytogenetics:	14q11.2
RefSeq ORF:	990
Summary:	Binds GTP saturably and exhibits a low intrinsic rate of GTP hydrolysis.[UniProtKB/Swiss-Prot Function]

### Product images:



Coomassie blue staining of purified REM2 protein (Cat# [TP307806]). The protein was produced from HEK293T cells transfected with REM2 cDNA clone (Cat# [RC207806]) using MegaTran 2.0 (Cat# [TT210002]).