

Product datasheet for **TP307806L**

REM2 (NM_173527) Human Recombinant Protein

Product data:

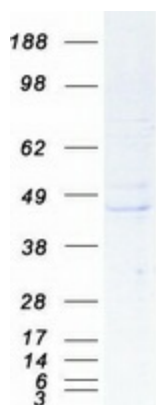
Product Type:	Recombinant Proteins
Description:	Recombinant protein of human RAS (RAD and GEM)-like GTP binding 2 (REM2), 1 mg
Species:	Human
Expression Host:	HEK293T
Expression cDNA Clone or AA Sequence:	>RC207806 protein sequence Red =Cloning site Green =Tags(s)
	MDTETTALCPSGSRRASPPGTPTPEADATLLKKSEKLLAELDRSGLPSAPGAPRRRGSMPPVYPKHQLRRA QAVDELDWPPQASSSGSSDSLGSGEAAPAQKDGIKVMVLVGESGVGKSTLAGTFGGLQGDSAHEPENPE D TYERRIMVDKEEVTLVYDIWEQGDAGGWL RDHCLQTGDAFLIVFSVTDRRSFSKVPETLLRLRAGRPHH DLPVILVGNKSDLARSREVSLEEGRHLAGTSLCKHIETSAALHHNTRELFEHAVRQIRLRGRNHAGGQR PDPGSPEGPAPPARRESLTKAKRFLANLVPRNAKFFKQRSRSCHDLSVL
	TRTRPLEQKLISEEDLAANDILDYKDDDDKV
Tag:	C-Myc/DDK
Predicted MW:	37 kDa
Concentration:	>0.05 µg/µL as determined by microplate BCA method
Purity:	> 80% as determined by SDS-PAGE and Coomassie blue staining
Buffer:	25 mM Tris-HCl, 100 mM glycine, pH 7.3, 10% glycerol
Preparation:	Recombinant protein was captured through anti-DDK affinity column followed by conventional chromatography steps.
Note:	For testing in cell culture applications, please filter before use. Note that you may experience some loss of protein during the filtration process.
Storage:	Store at -80°C.
Stability:	Stable for 12 months from the date of receipt of the product under proper storage and handling conditions. Avoid repeated freeze-thaw cycles.
RefSeq:	<u>NP_775798</u>
Locus ID:	161253



[View online »](#)

UniProt ID:	<u>Q8IYK8</u>
RefSeq Size:	1885
Cytogenetics:	14q11.2
RefSeq ORF:	990
Summary:	Binds GTP saturably and exhibits a low intrinsic rate of GTP hydrolysis.[UniProtKB/Swiss-Prot Function]

Product images:



Coomassie blue staining of purified REM2 protein (Cat# [TP307806]). The protein was produced from HEK293T cells transfected with REM2 cDNA clone (Cat# [RC207806]) using MegaTran 2.0 (Cat# [TT210002]).