

Product datasheet for **TP307806**

REM2 (NM_173527) Human Recombinant Protein

Product data:

Product Type: Recombinant Proteins

Description: Recombinant protein of human RAS (RAD and GEM)-like GTP binding 2 (REM2), 20 µg

Species: Human

Expression Host: HEK293T

**Expression cDNA Clone
or AA Sequence:** >RC207806 protein sequence
Red=Cloning site **Green**=Tags(s)

MDTETTALCPSGSRRASPPGTPTPEADATLLKKSEKLLAELDRSGLPSAPGAPRRRGSMPPVYKHLRRA
QAVDELDWPPQASSGSSDSLGSGEAAPAQKDGIFKVMLVGESGVGKSTLAGTFGGLQGDSAHEPENPED
TYERRIMVDKEEVLVYDIWEQGDAGGWLRDHCLQTGDAFLIVSVTDRRSFSKVPETLLRLRAGRPHH
DLPVILVGNKSDLARSREVSLEEGRHLAGTSLCKHIETSAALHHNTRELFEAVRQIRLRRGRNHAGGQR
PDPGSPEGPAPPARRESLTKKAKRFLANLVPRNAKFFKQRSRSCHDLSVL

TRTRPLEQKLISEEDLAANDILDYKDDDDKV

Tag: C-Myc/DDK

Predicted MW: 37 kDa

Concentration: >0.05 µg/µL as determined by microplate BCA method

Purity: > 80% as determined by SDS-PAGE and Coomassie blue staining

Buffer: 25 mM Tris-HCl, 100 mM glycine, pH 7.3, 10% glycerol

Preparation: Recombinant protein was captured through anti-DDK affinity column followed by conventional chromatography steps.

Note: For testing in cell culture applications, please filter before use. Note that you may experience some loss of protein during the filtration process.

Storage: Store at -80°C.

Stability: Stable for 12 months from the date of receipt of the product under proper storage and handling conditions. Avoid repeated freeze-thaw cycles.

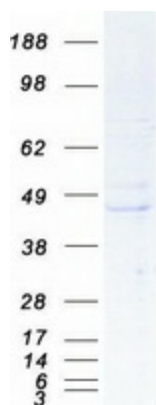
RefSeq: [NP_775798](#)

Locus ID: 161253



[View online »](#)

UniProt ID:	<u>Q8IYK8</u>
RefSeq Size:	1885
Cytogenetics:	14q11.2
RefSeq ORF:	990
Summary:	Binds GTP saturably and exhibits a low intrinsic rate of GTP hydrolysis.[UniProtKB/Swiss-Prot Function]

Product images:

Coomassie blue staining of purified REM2 protein (Cat# TP307806). The protein was produced from HEK293T cells transfected with REM2 cDNA clone (Cat# [RC207806]) using MegaTran 2.0 (Cat# [TT210002]).