

## Product datasheet for TP307794M

### CXCR2 (NM\_001557) Human Recombinant Protein

#### Product data:

Product Type:	Recombinant Proteins
Description:	Recombinant protein of human interleukin 8 receptor, beta (IL8RB), 100 µg
Species:	Human
Expression Host:	HEK293T
Expression cDNA Clone or AA Sequence:	>RC207794 protein sequence <b>Red</b> =Cloning site <b>Green</b> =Tags(s)
	MEDFNMESDSFEDFWKGEDLSNYSYSSTLPPFLDAAPCEPESLEINKYFVWIIYALVFLSLLGNSLVM LVILYSRVGRSVTDVYLLNLALADLLFALTLPWAASKVNGWIFGTFLCKVVSLLKEVNFYSGILLACI SVDRYLAIVHATRTLTKRYLVKFCLSIWGLSLLALPVLLFRRTVYSSNVSPACYEDMGNNTANWRML LRILPQSFQFIVPLLIMLCYGFTRLRTLFKAHMGQKHRAMRVIFAVVLIFFLLCWLPYNLVLLADTL MRTQ VIQETCERRNHIDRALDATEILGILHSCLNPLIYAFIQKFRHGLLKILAIHGLISKDSLPKDSRPSFVG SSSGHTSTTL
	<b>TRTRPLEQKLISEEDLAANDILDYKDDDDKV</b>
Tag:	C-Myc/DDK
Predicted MW:	40.6 kDa
Concentration:	>0.05 µg/µL as determined by microplate BCA method
Purity:	> 80% as determined by SDS-PAGE and Coomassie blue staining
Buffer:	25 mM Tris-HCl, 100 mM glycine, pH 7.3, 10% glycerol
Preparation:	Recombinant protein was captured through anti-DDK affinity column followed by conventional chromatography steps.
Note:	For testing in cell culture applications, please filter before use. Note that you may experience some loss of protein during the filtration process.
Storage:	Store at -80°C.
Stability:	Stable for 12 months from the date of receipt of the product under proper storage and handling conditions. Avoid repeated freeze-thaw cycles.
RefSeq:	<a href="#">NP_001548</a>
Locus ID:	3579



[View online »](#)

UniProt ID: [P25025, Q53PC4](#)

RefSeq Size: 2880

Cytogenetics: 2q35

RefSeq ORF: 1080

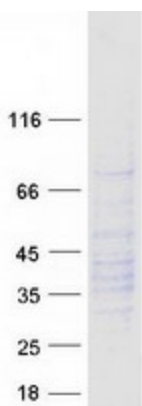
Synonyms: CD182; CDw128b; CMKAR2; IL8R2; IL8RA; IL8RB

**Summary:** The protein encoded by this gene is a member of the G-protein-coupled receptor family. This protein is a receptor for interleukin 8 (IL8). It binds to IL8 with high affinity, and transduces the signal through a G-protein activated second messenger system. This receptor also binds to chemokine (C-X-C motif) ligand 1 (CXCL1/MGSA), a protein with melanoma growth stimulating activity, and has been shown to be a major component required for serum-dependent melanoma cell growth. This receptor mediates neutrophil migration to sites of inflammation. The angiogenic effects of IL8 in intestinal microvascular endothelial cells are found to be mediated by this receptor. Knockout studies in mice suggested that this receptor controls the positioning of oligodendrocyte precursors in developing spinal cord by arresting their migration. This gene, IL8RA, a gene encoding another high affinity IL8 receptor, as well as IL8RBP, a pseudogene of IL8RB, form a gene cluster in a region mapped to chromosome 2q33-q36. Alternatively spliced variants, encoding the same protein, have been identified. [provided by RefSeq, Nov 2009]

**Protein Families:** Druggable Genome, GPCR, Transmembrane

**Protein Pathways:** Chemokine signaling pathway, Cytokine-cytokine receptor interaction, Endocytosis, Epithelial cell signaling in Helicobacter pylori infection

### Product images:



Coomassie blue staining of purified CXCR2 protein (Cat# [TP307794]). The protein was produced from HEK293T cells transfected with CXCR2 cDNA clone (Cat# [RC207794]) using MegaTran 2.0 (Cat# [TT210002]).