

## Product datasheet for TP307777L

### Intrinsic Factor (GIF) (NM\_005142) Human Recombinant Protein

#### Product data:

Product Type:	Recombinant Proteins
Description:	Recombinant protein of human gastric intrinsic factor (vitamin B synthesis) (GIF), 1 mg
Species:	Human
Expression Host:	HEK293T
Expression cDNA Clone or AA Sequence:	>RC207777 protein sequence Red=Cloning site Green=Tags(s)

MAWFALYLLSLLWATAGTSTQTQSSCSVPSAQEPLVNGIQVLMENSVTSSAYPNPSILIAMNLAGAYNLK  
AQKLLTYQLMSSDNDLTIGQLGLTIMALTSSCRDPGDKVSILQRQMENWAPSSPNAEASAFYGPSSLAIL  
ALCQKNSEATLPIAVRFAKLLANSSPFNVDTGAMATLALTCMYNKIPVGSEEGYRSLFGQVLKDIVKEI  
SMKIKDNGIIGDIYSTGLAMQALSVTPEPSKKEWNCKKTTDMILNEIKQGKFHNPMSIAQILPSLKGKTY  
LDVPQVTCSPDHEVQPTLPSNPGPGPTSASNITVIYTINNQLRGVELLNETINVSVKSGSVLLVLEEA  
QRKNPMFKFETTMTSWGLVSSINNIENVNHKTYWQFLSGVTPLNQEGVADYIPFNHEHITANFTQY

TRTRPLEQKLISEEDLAANDILDYKDDDDKV

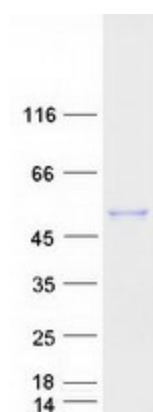
Tag:	C-Myc/DDK
Predicted MW:	43.4 kDa
Concentration:	>0.05 µg/µL as determined by microplate BCA method
Purity:	> 80% as determined by SDS-PAGE and Coomassie blue staining
Buffer:	25 mM Tris-HCl, 100 mM glycine, pH 7.3, 10% glycerol
Preparation:	Recombinant protein was captured through anti-DDK affinity column followed by conventional chromatography steps.
Note:	For testing in cell culture applications, please filter before use. Note that you may experience some loss of protein during the filtration process.
Storage:	Store at -80°C.
Stability:	Stable for 12 months from the date of receipt of the product under proper storage and handling conditions. Avoid repeated freeze-thaw cycles.
RefSeq:	<a href="#">NP_005133</a>
Locus ID:	2694



[View online »](#)

UniProt ID:	<a href="#">P27352</a>
RefSeq Size:	1536
Cytogenetics:	11q12.1
RefSeq ORF:	1251
Synonyms:	GIF; IF; IFMH; INF; TCN3
Summary:	This gene is a member of the cobalamin transport protein family. It encodes a glycoprotein secreted by parietal cells of the gastric mucosa and is required for adequate absorption of vitamin B12. Vitamin B12 is necessary for erythrocyte maturation and mutations in this gene may lead to congenital pernicious anemia. [provided by RefSeq, Jul 2008]
Protein Families:	Secreted Protein

### Product images:



Coomassie blue staining of purified CBLIF protein (Cat# [TP307777]). The protein was produced from HEK293T cells transfected with CBLIF cDNA clone (Cat# [RC207777]) using MegaTran 2.0 (Cat# [TT210002]).