

Product datasheet for TP307777

Intrinsic Factor (GIF) (NM_005142) Human Recombinant Protein

Product data:

| | |
|---------------------------------------|--|
| Product Type: | Recombinant Proteins |
| Description: | Recombinant protein of human gastric intrinsic factor (vitamin B synthesis) (GIF), 20 µg |
| Species: | Human |
| Expression Host: | HEK293T |
| Expression cDNA Clone or AA Sequence: | >RC207777 protein sequence Red=Cloning site Green=Tags(s) |

MAWFALYLLSLLWATAGTSTQTQSSCSVPSAQEPLVNGIQVLMENSVTSSAYPNPSILIAMNLAGAYNLK
AQKLLTYQLMSSDNNDLTIGQLGLTIMALTSSCRDPGDKVSILQRQMENWAPSSPNAEASAFYGPSSLAIL
ALCQKNSEATLPIAVRFAKLLANSSPFNVDTGAMATLALTCMYNKIPVGSEEGYRSLFGQVLKDIVEKI
SMKIKDNGIIGDIYSTGLAMQALSVTPEPSKKEWNCKKTTDMILNEIKQGKFHNPMASIAQILPSLKGKTY
LDVPQVTCSPDHEVQPTLPSNPGPGPTSASNITVIYTINNQLRGVELLNETINVSVKSGSVLLVLEEA
QRKNPMFKFETTMTSWGLVSSINNAENVNHKTYWQFLSGVTPLNQGVADYIPFNHEHITANFTQY

TRTRPLEQKLISEEDLAANDILDYKDDDDKV

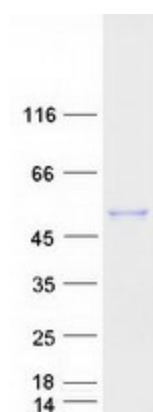
| | |
|----------------|--|
| Tag: | C-Myc/DDK |
| Predicted MW: | 43.4 kDa |
| Concentration: | >0.05 µg/µL as determined by microplate BCA method |
| Purity: | > 80% as determined by SDS-PAGE and Coomassie blue staining |
| Buffer: | 25 mM Tris-HCl, 100 mM glycine, pH 7.3, 10% glycerol |
| Preparation: | Recombinant protein was captured through anti-DDK affinity column followed by conventional chromatography steps. |
| Note: | For testing in cell culture applications, please filter before use. Note that you may experience some loss of protein during the filtration process. |
| Storage: | Store at -80°C. |
| Stability: | Stable for 12 months from the date of receipt of the product under proper storage and handling conditions. Avoid repeated freeze-thaw cycles. |
| RefSeq: | NP_005133 |
| Locus ID: | 2694 |



[View online »](#)

| | |
|-------------------|---|
| UniProt ID: | P27352 |
| RefSeq Size: | 1536 |
| Cytogenetics: | 11q12.1 |
| RefSeq ORF: | 1251 |
| Synonyms: | GIF; IF; IFMH; INF; TCN3 |
| Summary: | This gene is a member of the cobalamin transport protein family. It encodes a glycoprotein secreted by parietal cells of the gastric mucosa and is required for adequate absorption of vitamin B12. Vitamin B12 is necessary for erythrocyte maturation and mutations in this gene may lead to congenital pernicious anemia. [provided by RefSeq, Jul 2008] |
| Protein Families: | Secreted Protein |

Product images:



Coomassie blue staining of purified CBLIF protein (Cat# TP307777). The protein was produced from HEK293T cells transfected with CBLIF cDNA clone (Cat# [RC207777]) using MegaTran 2.0 (Cat# [TT210002]).