

Product datasheet for TP307767M

NAB1 (NM_005966) Human Recombinant Protein

Product data:

Product Type:	Recombinant Proteins
Description:	Recombinant protein of human NGFI-A binding protein 1 (EGR1 binding protein 1) (NAB1), 100 µg
Species:	Human
Expression Host:	HEK293T
Expression cDNA Clone or AA Sequence:	>RC207767 protein sequence Red=Cloning site Green=Tags(s)

MAAALPRTLGLQLYRILQKANLLSYFDAFIQQGGDDVQQLCEAGEEEEFLEIMALVGMASKPLHVRRLLQK
ALRDWVTNPGLFNQPLTSLPVSSIPYKLPESPTWLGISCSYERSNAREPHLKIPKCAATTCVQSLG
QGKSDVVGSLALQSVGESRLWQGHATESEHSLSPADLGSPASPKESEALDAAAALSVAECVERMAPTL
PKSDLNEVKELLKTNKKLAKMIGHIFEMNDDDPHKEEEIRKYSAYGRFDSKRKDGKHLTLHELTVNEAA
AQLCVKDNALLTRRDEL FALARQISREVTYKYTYRTTKSKCGERDELSPKRIKVEDGFPDFQDSVQTLFQ
QARAKSEELAALSSQQPEKVMAKQMEFLCNQAGYERLQHAERRLSAGLYRQSSEEHSPNGLTSDNSDGQG
ERPLNLRMPNLQNRQPHHFVVDGELSRLYPSEAKSHSSESLGILKDYPHSAFTLEKKVIKTEPEDSR

TRTRPLEQKLISEEDLAANDILDYKDDDDKV

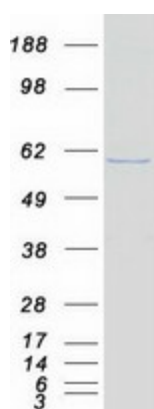
Tag:	C-Myc/DDK
Predicted MW:	54.2 kDa
Concentration:	>0.05 µg/µL as determined by microplate BCA method
Purity:	> 80% as determined by SDS-PAGE and Coomassie blue staining
Buffer:	25 mM Tris-HCl, 100 mM glycine, pH 7.3, 10% glycerol
Preparation:	Recombinant protein was captured through anti-DDK affinity column followed by conventional chromatography steps.
Note:	For testing in cell culture applications, please filter before use. Note that you may experience some loss of protein during the filtration process.
Storage:	Store at -80°C.
Stability:	Stable for 12 months from the date of receipt of the product under proper storage and handling conditions. Avoid repeated freeze-thaw cycles.



[View online »](#)

RefSeq:	NP_005957
Locus ID:	4664
UniProt ID:	Q13506
RefSeq Size:	4499
Cytogenetics:	2q32.2
RefSeq ORF:	1461
Summary:	Acts as a transcriptional repressor for zinc finger transcription factors EGR1 and EGR2. [UniProtKB/Swiss-Prot Function]
Protein Families:	Transcription Factors

Product images:



Coomassie blue staining of purified NAB1 protein (Cat# [TP307767]). The protein was produced from HEK293T cells transfected with NAB1 cDNA clone (Cat# [RC207767]) using MegaTran 2.0 (Cat# [TT210002]).