

Product datasheet for TP307749L

SNPH (NM_014723) Human Recombinant Protein

Product data:

Product Type:	Recombinant Proteins
Description:	Recombinant protein of human syntaphilin (SNPH), 1 mg
Species:	Human
Expression Host:	HEK293T
Expression cDNA Clone or AA Sequence:	>RC207749 protein sequence Red=Cloning site Green=Tags(s)

MAMSLPGSRRTSAGSRRRTSPPVSVRDAYGTSSLSSSSNSGSYKGS DSSPTPRRSMKYTLCSDNHGIKPP
TPEQYLTPQQKEVCIRHLKARLKDTQDRLQDRDTEIDDLKTQLSRMQEDWIEEECHRVEAQLALKEARK
EIKQLKQVIDTVKNNLIDKDKGLQKYFVDINIQNKKLETLLHSMEVAQNGMAKEDGTGESAGGSPARSLT
RSSTYTKLSDPAVCGDRQPGDPSSGSAEDGADSGFAAADTLSRTDALEASSLLSSGVD CGTEETSLHSS
FGLGPRFPASNTYEKLLCGMEAGVQASCMQERAIQTDFVQYQPDLDLTILEKVTQAQVCGTDPESGDRCPE
LDAHPSGPRDPNSAVVTVGDELEAPEPITRGPTPQRPGANPNPGQSVSVVCPMEEEEEAAVAEKEPKSY
WSRHYIVDLLAVVPAVPTVAWLCRSQRRQGQPIYNISSLLRGCTVALHSIRRISCRSLSQSPSPAGG
GSQL

TRTRPLEQKLISEEDLAANDILDYKDDDDKV

Tag:	C-Myc/DDK
Predicted MW:	53.4 kDa
Concentration:	>0.05 µg/µL as determined by microplate BCA method
Purity:	> 80% as determined by SDS-PAGE and Coomassie blue staining
Buffer:	25 mM Tris-HCl, 100 mM glycine, pH 7.3, 10% glycerol
Preparation:	Recombinant protein was captured through anti-DDK affinity column followed by conventional chromatography steps.
Note:	For testing in cell culture applications, please filter before use. Note that you may experience some loss of protein during the filtration process.
Storage:	Store at -80°C.
Stability:	Stable for 12 months from the date of receipt of the product under proper storage and handling conditions. Avoid repeated freeze-thaw cycles.



[View online »](#)

RefSeq: [NP_055538](#)

Locus ID: 9751

UniProt ID: [O15079](#)

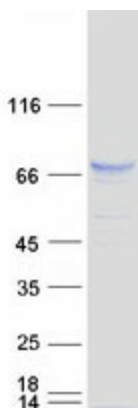
RefSeq Size: 5026

Cytogenetics: 20p13

RefSeq ORF: 1482

Summary: Syntaxin-1, synaptobrevin/VAMP, and SNAP25 interact to form the SNARE complex, which is required for synaptic vesicle docking and fusion. The protein encoded by this gene is membrane-associated and inhibits SNARE complex formation by binding free syntaxin-1. Expression of this gene appears to be brain-specific. Alternative splicing results in multiple transcript variants encoding different isoforms. [provided by RefSeq, Dec 2015]

Product images:



Coomassie blue staining of purified SNPH protein (Cat# [TP307749]). The protein was produced from HEK293T cells transfected with SNPH cDNA clone (Cat# [RC207749]) using MegaTran 2.0 (Cat# [TT210002]).