

Product datasheet for TP307747M

SEC24D (NM_014822) Human Recombinant Protein

Product data:

Product Type: Recombinant Proteins
Description: Recombinant protein of human SEC24 family, member D (*S. cerevisiae*) (SEC24D), 100 µg
Species: Human
Expression Host: HEK293T
Expression cDNA Clone or AA Sequence: >RC207747 protein sequence
Red=Cloning site Green=Tags(s)

MSQQGYVATPPYSQPQPGIGLSPPHYGHYGDPSHTASPTGMMKPAGPLGATATRGMLPPGPPPPGPHQFG
 QNGAHATGHPPQRFPGPPPVNNVASSHAPYQPSAQSSYPGPISTSSVTQLGSQLSAMQINSYGSGMAPP
 QGPPGPLSATSLSLQTPRPPQPSILQPGSQVLPPTTLNGPGASPLPLPMYRPDGLSGPPPPNAQYQPPP
 LPGQTLGAGYPPQAANSQPQMAQAQLSYPPGGFPGGPAQMGPPQPQKLDPDSIPSPIQVIENDRASRG
 GQVYATNTRGQIPPLVTTDCMIQDQGNASPRFIRCTTYCFPCTSDMAKQAQIPLAAVIKPFATIPSNESP
 LYLNVNHGESGPVRCNRCKAYMCPFMQFIEGGRRYQCGFCNCVNDVPPFYFQHLDHIGRRLDHYEKPELSL
 GSYEYVATLDYCRKSKPPNPPAFIFMIDVSYSNIKNGLVKLICEELKTMLEKIPKEEQEETS AIRVGFIT
 YNKVLHFFNVKSNLAQPQMMVVDVGEVFPVLLDGLFVNYQESQSVIHNLDDQIPDMFADSNENETVFP
 VIQAGMEALKAADCPGKLFIFHSSLPTAEAPGKLNRRDDKLVNTDKEKILFQPQTNVYDSLAKDCVAHG
 CSVTFLFPPSQYVDVASLGLVPQLTGGTLYKYNFQMHLDLRQQFLNDRNDIEKKIGFDAIMRVRTSTGF
 RATDFFGGILMNNTTDEMAAIDCDKAVTVEFKHDDKLESDSGALIQCAVLYTTISGQRRRLRIHNLGLNC
 SSQADLYKSCETDALINFFAKSAFKAVLHQPLKVIREILVNQTAHMLACYRKNCASPSAASQLILPDSM
 KVLVPMNCLLKNCVLLSRPEISTDERAYQRQLVMTMGVADSQFFYPQLLPIHTLDVKSTMLPAAVRCS
 ESRLSEEGIFLLANGLHMFLWLVGSSPPELIQGIFNVPSFAHINTDMTLLPEVGNPYSQQLRMIMGIIQQ
 KRPYSMKLTIKQREQPEMVFVRQFLVEDKGLYGGSSVDFLCCVHKEICQLLN

TRTRPLEQKLISEEDLAANDILDYKDDDDKV

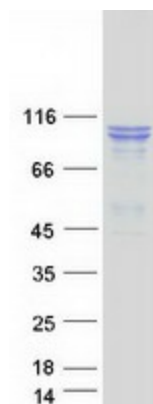
Tag: C-Myc/DDK
Predicted MW: 112.8 kDa
Concentration: >0.05 µg/µL as determined by microplate BCA method
Purity: > 80% as determined by SDS-PAGE and Coomassie blue staining
Buffer: 25 mM Tris-HCl, 100 mM glycine, pH 7.3, 10% glycerol



[View online »](#)

Preparation:	Recombinant protein was captured through anti-DDK affinity column followed by conventional chromatography steps.
Note:	For testing in cell culture applications, please filter before use. Note that you may experience some loss of protein during the filtration process.
Storage:	Store at -80°C.
Stability:	Stable for 12 months from the date of receipt of the product under proper storage and handling conditions. Avoid repeated freeze-thaw cycles.
RefSeq:	<u>NP_055637</u>
Locus ID:	9871
UniProt ID:	<u>O94855</u> , <u>A8K6V0</u>
RefSeq Size:	4077
Cytogenetics:	4q26
RefSeq ORF:	3099
Synonyms:	CLCRP2
Summary:	The protein encoded by this gene is a member of the SEC24 subfamily of the SEC23/SEC24 family, which is involved in vesicle trafficking. The encoded protein has similarity to yeast Sec24p component of COPII. COPII is the coat protein complex responsible for vesicle budding from the ER. This gene product is implicated in the shaping of the vesicle, and also in cargo selection and concentration. Mutations in this gene have been associated with Cole-Carpenter syndrome, a disorder affecting bone formation, resulting in craniofacial malformations and bones that break easily. Alternative splicing results in multiple transcript variants encoding different isoforms. [provided by RefSeq, Dec 2015]

Product images:



Coomassie blue staining of purified SEC24D protein (Cat# [TP307747]). The protein was produced from HEK293T cells transfected with SEC24D cDNA clone (Cat# [RC207747]) using MegaTran 2.0 (Cat# [TT210002]).