

Product datasheet for **TP307746M**

CTDSPL2 (NM_016396) Human Recombinant Protein

Product data:

Product Type: Recombinant Proteins

Description: Recombinant protein of human CTD (carboxy-terminal domain, RNA polymerase II, polypeptide A) small phosphatase like 2 (CTDSPL2), 100 µg

Species: Human

Expression Host: HEK293T

Expression cDNA Clone or AA Sequence: >RC207746 protein sequence
Red=Cloning site **Green**=Tags(s)

MRLRTRKASQQSNQIQRTARAKRKYSEVDDSLPSGGKPSKNETGLLSSIKKFIKGSTPKEERENPSK
RSRIERDIDNNLITSTPRAGEKPNKQISRVRRKSQVNGEAGSYEMTNQHVKQNGKLEDNPSSGSPRRTL
LGTIFSPVFNFFSPANKNGTSGSDSPGQAVEAEIVKQLDMEQVDEITTTSTTNGAAYSNQAVQVRPS
LNNGLEEAETVNRDIPPLTAPVTPDSGYSSAHAEATYEEDWEVFDPPYFIKHVPLPLTEQLNRKPALPL
KTRSTPEFSLVLDLDELTVHCSLNELEDAALTFPVLFDVIYQVYVRLRPFREFLERMSQMYEILFTA
SKKVYADKLLNILDPKKQLVRHRLFREHCVCVQGNVIKDLNILGRDLSKTIIDNSPQAFAYQLSNGIPI
ESWFMDKNDNELLKLPFLEKLVNELNEDVRPHIRDRFRLHDLPPD

TRTRPLEQKLISEEDLAANDILDYKDDDDKV

Tag: C-Myc/DDK

Predicted MW: 52.8 kDa

Concentration: >0.05 µg/µL as determined by microplate BCA method

Purity: > 80% as determined by SDS-PAGE and Coomassie blue staining

Buffer: 25 mM Tris-HCl, 100 mM glycine, pH 7.3, 10% glycerol

Preparation: Recombinant protein was captured through anti-DDK affinity column followed by conventional chromatography steps.

Note: For testing in cell culture applications, please filter before use. Note that you may experience some loss of protein during the filtration process.

Storage: Store at -80°C.

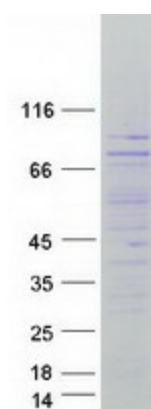
Stability: Stable for 12 months from the date of receipt of the product under proper storage and handling conditions. Avoid repeated freeze-thaw cycles.



[View online >](#)

RefSeq:	NP_057480
Locus ID:	51496
UniProt ID:	Q05D32
RefSeq Size:	4875
Cytogenetics:	15q15.3-q21.1
RefSeq ORF:	1398
Synonyms:	HSPC058; HSPC129; SCP4
Summary:	Probable phosphatase.[UniProtKB/Swiss-Prot Function]

Product images:



Coomassie blue staining of purified CTDSPL2 protein (Cat# [TP307746]). The protein was produced from HEK293T cells transfected with CTDSPL2 cDNA clone (Cat# [RC207746]) using MegaTran 2.0 (Cat# [TT210002]).