

## Product datasheet for **TP307743**

### AHSP (NM\_016633) Human Recombinant Protein

#### Product data:

Product Type:	Recombinant Proteins
Description:	Recombinant protein of human erythroid associated factor (ERAF), 20 µg
Species:	Human
Expression Host:	HEK293T
Expression cDNA Clone or AA Sequence:	>RC207743 protein sequence <b>Red</b> =Cloning site <b>Green</b> =Tags(s)
	MALLKANKDLISAGLKEFSVLLNQQVFNDPLVSEEDMVTVVEDWMNFYINYRQQTGEPQERDKALQEL RQELNLANPFLAKYRDFLKSHELPSHPPSS
	<b>TRTRPLEQKLISEEDLAANDILDYKDDDDKV</b>
Tag:	C-Myc/DDK
Predicted MW:	11.7 kDa
Concentration:	>0.05 µg/µL as determined by microplate BCA method
Purity:	> 80% as determined by SDS-PAGE and Coomassie blue staining
Buffer:	25 mM Tris-HCl, 100 mM glycine, pH 7.3, 10% glycerol
Preparation:	Recombinant protein was captured through anti-DDK affinity column followed by conventional chromatography steps.
Note:	For testing in cell culture applications, please filter before use. Note that you may experience some loss of protein during the filtration process.
Storage:	Store at -80°C.
Stability:	Stable for 12 months from the date of receipt of the product under proper storage and handling conditions. Avoid repeated freeze-thaw cycles.
RefSeq:	<a href="#">NP_057717</a>
Locus ID:	51327
UniProt ID:	<a href="#">Q9NZD4</a> , <a href="#">Q549J4</a>
RefSeq Size:	518
Cytogenetics:	16p11.2



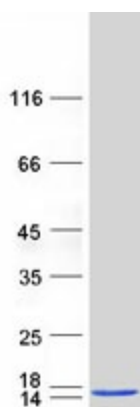
[View online »](#)

RefSeq ORF: 306

Synonyms: EDRE; ERAF

**Summary:** This gene encodes a molecular chaperone which binds specifically to free alpha-globin and is involved in hemoglobin assembly. The encoded protein binds to monomeric alpha-globin until it has been transferred to beta-globin to form a heterodimer, which in turn binds to another heterodimer to form the stable tetrameric hemoglobin. Alternative splicing results in multiple transcript variants. [provided by RefSeq, Dec 2015]

### Product images:



Coomassie blue staining of purified AHSP protein (Cat# TP307743). The protein was produced from HEK293T cells transfected with AHSP cDNA clone (Cat# [RC207743]) using MegaTran 2.0 (Cat# [TT210002]).