

Product datasheet for TP307732

MTMR14 (NM_001077525) Human Recombinant Protein

Product data:

Product Type: Recombinant Proteins
Description: Recombinant protein of human myotubularin related protein 14 (MTMR14), transcript variant 2, 20 µg
Species: Human
Expression Host: HEK293T
Expression cDNA Clone or AA Sequence: >RC207732 protein sequence
Red=Cloning site **Green**=Tags(s)

MAGARAAAAAASAGSSASSGNQPPQELGLGELLEEFRTQYRAKDGSGTGGSKVERIEKRCLFGRDYC
FSVPNTNGDICGHYPRHIVFLEYESSEKEKDTFESTVQVSKLQDLIHRSKMARCRGRFVCPVILFKGKH
ICRSATLAGWGELYGRSGYNYFFSGGADDAWADVEDVTEEDCALRSGDTHLFDKVRGYDIKLLRYSVKY
ICDLMVENKKVKFGMNVTSSEKVDKAQRYADFTLLSIPYPGCEFFKEYKDRDYMAEGLIFNWKQDYVDAP
LSIPDFLTHSLNIDWSQYQCWDLVQQTQNYLKLKLLSLVNSDDDSGLLVHCISGWDRTPLFISLLRSLWA
DGLIHTSLKPTILYLTVAYDWFLFGHMLVDRLSKGEEIFFCFNFKHITSEEFSAKLTQRRKSLPARD
GGFTLEDICMLRRKDRGSTTSLGSDFSLVMESSPGATGSFTYEAVELVPAGAPTQAAWRKSHSSSPQSVL
WNRQPSEDRLPSQQGLAEARSSSSSSSNHSDNFFRMGSSPLEVPKPRSDHPLPGSSLSTDYGSWQMVT
GCGSIQERAVLHTDSSLPFSFPDEL PNSCLLAALSDRETRLQEVRS AFLAAYSSTVGLRAVAPSPSGAIG
GLLEQFARGVGLRSISSNAL

TRTRPLEQKLISEEDLAANDILDYKDDDDKV

Tag: C-Myc/DDK
Predicted MW: 72 kDa
Concentration: >0.05 µg/µL as determined by microplate BCA method
Purity: > 80% as determined by SDS-PAGE and Coomassie blue staining
Buffer: 25 mM Tris-HCl, 100 mM glycine, pH 7.3, 10% glycerol
Preparation: Recombinant protein was captured through anti-DDK affinity column followed by conventional chromatography steps.
Note: For testing in cell culture applications, please filter before use. Note that you may experience some loss of protein during the filtration process.
Storage: Store at -80°C.



[View online »](#)

Stability: Stable for 12 months from the date of receipt of the product under proper storage and handling conditions. Avoid repeated freeze-thaw cycles.

RefSeq: [NP_001070993](#)

Locus ID: 64419

UniProt ID: [Q8NCE2](#)

RefSeq Size: 2536

Cytogenetics: 3p25.3

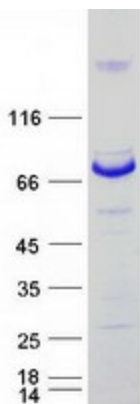
RefSeq ORF: 1950

Synonyms: C3orf29

Summary: This gene encodes a myotubularin-related protein. The encoded protein is a phosphoinositide phosphatase that specifically dephosphorylates phosphatidylinositol 3,5-bisphosphate and phosphatidylinositol 3-phosphate. Mutations in this gene are correlated with autosomal dominant centronuclear myopathy. Alternate splicing results in multiple transcript variants. A pseudogene of this gene is found on chromosome 18.[provided by RefSeq, Apr 2010]

Protein Families: Druggable Genome, Phosphatase, Secreted Protein

Product images:



Coomassie blue staining of purified MTMR14 protein (Cat# TP307732). The protein was produced from HEK293T cells transfected with MTMR14 cDNA clone (Cat# [RC207732]) using MegaTran 2.0 (Cat# [TT210002]).