

## Product datasheet for **TP307725M**

### TM4SF20 (NM\_024795) Human Recombinant Protein

#### Product data:

Product Type:	Recombinant Proteins
Description:	Recombinant protein of human transmembrane 4 L six family member 20 (TM4SF20), 100 µg
Species:	Human
Expression Host:	HEK293T
Expression cDNA Clone or AA Sequence:	>RC207725 protein sequence Red=Cloning site Green=Tags(s)

MTCCEGWTSCNGFSLVLLLLGVLNVIPLIVSLVEEDQFSQNPISCFEWWFPGIIGAGLMAIPATTMSL  
TARKRACNNRTGMFLSSFFSVITVIGALYCM LISIQALLKGPLMCNSPNSNANCEFSLKNISDIHPES  
FNLQWFFNDSCAPPTGFNKPTSNDTMASGWRASSFFHFDSEENKHLIHFVFLG LLLLVGILEVLFGLSQI  
VIGFLGCLCGVSKRRSQIV

TRTRPLEQKLISEEDLAANDILDYKDDDDKV

Tag:	C-Myc/DDK
Predicted MW:	24.9 kDa
Concentration:	>0.05 µg/µL as determined by microplate BCA method
Purity:	> 80% as determined by SDS-PAGE and Coomassie blue staining
Buffer:	25 mM Tris-HCl, 100 mM glycine, pH 7.3, 10% glycerol
Preparation:	Recombinant protein was captured through anti-DDK affinity column followed by conventional chromatography steps.
Note:	For testing in cell culture applications, please filter before use. Note that you may experience some loss of protein during the filtration process.
Storage:	Store at -80°C.
Stability:	Stable for 12 months from the date of receipt of the product under proper storage and handling conditions. Avoid repeated freeze-thaw cycles.
RefSeq:	<u><a href="#">NP_079071</a></u>
Locus ID:	79853
UniProt ID:	<u><a href="#">Q53R12</a></u>



[View online »](#)

RefSeq Size: 2310

Cytogenetics: 2q36.3

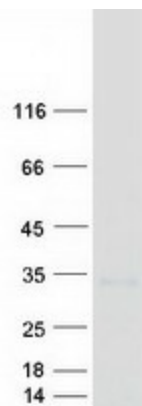
RefSeq ORF: 687

Synonyms: PRO994; SLI5; TCCE518

**Summary:** The protein encoded by this gene is a member of the four-transmembrane L6 superfamily. Members of this family function in various cellular processes including cell proliferation, motility, and adhesion via their interactions with integrins. In human brain tissue, this gene is expressed at high levels in the parietal lobe, occipital lobe, hippocampus, pons, white matter, corpus callosum, and cerebellum. Knockout of the homologous gene in mouse results in a neurobehavioral phenotype with suggested enhanced motor coordination. A deletion mutation in the human gene is associated with specific language impairment-5. [provided by RefSeq, Jul 2016]

**Protein Families:** Transmembrane

### Product images:



Coomassie blue staining of purified TM4SF20 protein (Cat# [TP307725]). The protein was produced from HEK293T cells transfected with TM4SF20 cDNA clone (Cat# [RC207725]) using MegaTran 2.0 (Cat# [TT210002]).