

Product datasheet for TP307686L

IKAP (IKBKAP) (NM_003640) Human Recombinant Protein

Product data:

Product Type:	Recombinant Proteins
Description:	Recombinant protein of human inhibitor of kappa light polypeptide gene enhancer in B-cells, kinase complex-associated protein (IKBKAP), 1 mg
Species:	Human
Expression Host:	HEK293T
Expression cDNA Clone or AA Sequence:	>RC207686 representing NM_003640 Red=Cloning site Green=Tags(s)

MRNLKLFRTLEFRDIQGGNPQCFSRLRTEQGTVLIGSEHGLIEVDPVSREVKNEVSLVAEGFLPEDGSGR
IVGVQDLLDQESVCVATASGDVILCSLSTQQLECVGSVASGISVMSWSPDQELVLLATGQQTLMIMTKDF
EPILEQQIHQDDFGESKFITVWGRKETQFHGSEGRQAAFQMOMHESALPWDDHRPQVTRWDGQFFAVS
VWCPETGARKVRVWNREFALQSTSEPVAGLGPALAWKPSGLIASTQDKPNQQDIVFFEKNGLLHGHTL
PFLKDEVKVNLDLLWNADSSVLAVWLEDLQREESSIPKTCVQLWTVGNHWHYLKQSLSFSTCGKSKIVSLM
WDPVTPYRLHVLCCQGWHLAYDWHWTTDRSVGDNSSDLNVAVIDGNRVLVTVFRQTVPPMCTYQLLF
PHPVNQVTFLAHPQKSNLDLAVLDASNQISVYKCGDCPSADPTVKLGAVGGSGFKVCLRTPHLEKRYKIQF
ENNEDQDVNPLKLGLLTWIEEDVFLAVSHSEFSPRSVIHHLTAASSEMDEEHGQLNVSSSAAVDGVIIISL
CCNSKTKSVVLQADGQIFKYLWESPSLAIKPWKNSGGFPVRFYPCTQTELAMIGEECVLGLTDRCRF
FINDIEVASNITSFAVYDEFLLLTTHSHTCQCFCLRDASFKTLQAGLSSNHVSHGEVLRKVERGSRIVTV
VPQDQTKLVLMQPRGNLEVVHHRALVLAQIRKWLDKLMFKEAFECMRKLRINLNLIYDHNPKVFLGNVETV
IKQIDSVNHINLFFTELKEEDVTKMYPAPVTSSVYLSRDPDGNKIDLVCDAMRAVMESINPHKYCLSIL
TSHVKKTTPELIVLQKVHELQGNAPSDPDVSAEEALKYLLHLVDVNELYDHSGLTYDFDLVLMVAEKS
QKDPKEYLPFLNLTLLKMETNYQRFTIDKYLKRYEKAIGHLSKCGPEYFPECLNLIKDKNLYNEALKLYSP
SSQQYQDISIAYGEHLMQEHMYEPAGLMFARCGAHEKALSALFTCGNWKQALCVAAQLNFTKDQLVGLGR
TLAGKLVQRKHIDAAMVLEECAQDYEEAVLLLLLEGAWEEALRLVYKYNRLDIETNVKPSILEAQKNY
MAFLDSQTATFSRHKKRLLVRELKEQAQQAGLDDEVPHGQESDLFSETSSVSGSEMSEMSGKYSHSNRIS
ARSSKNRRKAERKKHSLKEGSPLEDLALLEALSEVVQNTENLKDEVYHILKVLFLFEFDEQGRELQKAFE
DTLQLMERSLPEIWTLYQQNSATPVLGPNSTANSIMASYQQKTSVPVLDALFIPPKINRRTQWKLSL
LD

TRTRPLEQKLISEEDLAANDILDYKDDDDKV

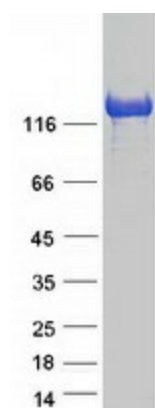
Tag:	C-Myc/DDK
Predicted MW:	150.1 kDa



[View online >](#)

Concentration:	>0.05 µg/µL as determined by microplate BCA method
Purity:	> 80% as determined by SDS-PAGE and Coomassie blue staining
Buffer:	25 mM Tris-HCl, 100 mM glycine, pH 7.3, 10% glycerol
Preparation:	Recombinant protein was captured through anti-DDK affinity column followed by conventional chromatography steps.
Note:	For testing in cell culture applications, please filter before use. Note that you may experience some loss of protein during the filtration process.
Storage:	Store at -80°C.
Stability:	Stable for 12 months from the date of receipt of the product under proper storage and handling conditions. Avoid repeated freeze-thaw cycles.
RefSeq:	NP_003631
Locus ID:	8518
UniProt ID:	O95163 , Q4LE38 , Q8N516
RefSeq Size:	5917
Cytogenetics:	9q31.3
RefSeq ORF:	3996
Synonyms:	DYS; FD; IKAP; IKBKAP; IKI3; TOT1
Summary:	The protein encoded by this gene is a scaffold protein and a regulator for three different kinases involved in proinflammatory signaling. The encoded protein can bind NF-kappa-B-inducing kinase and I-kappa-B kinases through separate domains and assemble them into an active kinase complex. Mutations in this gene have been associated with familial dysautonomia. Alternative splicing results in multiple transcript variants encoding different isoforms. [provided by RefSeq, Jan 2016]
Protein Families:	Druggable Genome

Product images:



Coomassie blue staining of purified ELP1 protein (Cat# [TP307686]). The protein was produced from HEK293T cells transfected with ELP1 cDNA clone (Cat# [RC207686]) using MegaTran 2.0 (Cat# [TT210002]).