

## Product datasheet for **TP307685M**

### NGAL (LCN2) (NM\_005564) Human Recombinant Protein

#### Product data:

**Product Type:** Recombinant Proteins

**Description:** Recombinant protein of human lipocalin 2 (LCN2), 100 µg

**Species:** Human

**Expression Host:** HEK293T

**Expression cDNA Clone  
or AA Sequence:** >RC207685 protein sequence  
**Red**=Cloning site **Green**=Tags(s)

MPLGLLLWLGLALLGALHAQAQDSTSDLIPAPPLSKVPLQQNFQDNQFQGGKWWVGLAGNAILREDKDPQK  
MYATYIELKEDKSYNVTSVLFRRKKCDYWIRTFVPGCQPGFTLGNIKSYPLTSLYLRVWSTNYNQHAM  
VFFKVSQNREYFKITLYGRTKELTSELKENFIRFSKSLGLPENHIVFPVPIDQCIDG

**TRTRPLEQKLISEEDLAANDILDYKDDDDKV**

**Tag:** C-Myc/DDK

**Predicted MW:** 22.4 kDa

**Concentration:** >0.05 µg/µL as determined by microplate BCA method

**Purity:** > 80% as determined by SDS-PAGE and Coomassie blue staining

**Buffer:** 25 mM Tris-HCl, 100 mM glycine, pH 7.3, 10% glycerol

**Preparation:** Recombinant protein was captured through anti-DDK affinity column followed by conventional chromatography steps.

**Note:** For testing in cell culture applications, please filter before use. Note that you may experience some loss of protein during the filtration process.

**Storage:** Store at -80°C.

**Stability:** Stable for 12 months from the date of receipt of the product under proper storage and handling conditions. Avoid repeated freeze-thaw cycles.

**RefSeq:** [NP\\_005555](#)

**Locus ID:** 3934

**UniProt ID:** [P80188](#)

**RefSeq Size:** 840



[View online »](#)

Cytogenetics: 9q34.11

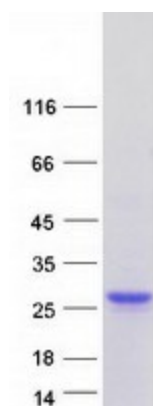
RefSeq ORF: 594

Synonyms: 24p3; MSFI; NGAL; p25

**Summary:** This gene encodes a protein that belongs to the lipocalin family. Members of this family transport small hydrophobic molecules such as lipids, steroid hormones and retinoids. The protein encoded by this gene is a neutrophil gelatinase-associated lipocalin and plays a role in innate immunity by limiting bacterial growth as a result of sequestering iron-containing siderophores. The presence of this protein in blood and urine is an early biomarker of acute kidney injury. This protein is thought to be involved in multiple cellular processes, including maintenance of skin homeostasis, and suppression of invasiveness and metastasis. Mice lacking this gene are more susceptible to bacterial infection than wild type mice. [provided by RefSeq, Sep 2015]

**Protein Families:** Secreted Protein

### Product images:



Coomassie blue staining of purified LCN2 protein (Cat# [TP307685]). The protein was produced from HEK293T cells transfected with LCN2 cDNA clone (Cat# [RC207685]) using MegaTran 2.0 (Cat# [TT210002]).