

Product datasheet for TP307653

TLK1 (NM_012290) Human Recombinant Protein

Product data:

Product Type:	Recombinant Proteins
Description:	Recombinant protein of human tousled-like kinase 1 (TLK1), transcript variant 1, 20 µg
Species:	Human
Expression Host:	HEK293T
Expression cDNA Clone or AA Sequence:	>RC207653 protein sequence Red=Cloning site Green=Tags(s)

MSVQSSSGSLEGPPSWSQLSTSPTPGSAAAARSLNHTPPSGRPREGAMDELHSLDPRRQELLEARFTGV
ASGSTGSTGSCSVGAKASTNNESSNHSFGSLGSLSDKESETPEKKQSESSRGRKKAENQNESSQGKSIG
GRGHKISDYFEYQGGNGSSPVRGIPPAIRSPQNSHSHSTPSSSVRPNSPSPTALAFGDHPVQPKQLSFK
IIQTDLTMLKLALESNKIQDLEKKEGRIDDLRANCDLRRQIDEQQKLEKYKERLNKCISMSKLLIE
KSTQEKLSSREKSMQDRLRLGHFTTVRHGASFTEQWTDGFAFQNLVKQQEWNQREDIERQRKLLAKRK
PPTANNSQAPSTNSEPKQRKNKAVNGAENDPFVRPNLPQLLTLAEYHEQEEIFKLRLGHLKKEEAEIQAE
LERLERVRNLHIRELKRINNEDNSQFKDHPTLNERYLLHLLGRGGFSEVYKAFDLYEQRYAAVKIHQLN
KSWRDEKKENYHKHACREYRIHKELDHPRIVKLYDYFSLD TDFCTVLEYCEGNDLDFYKQHKLMSEKE
ARSIVMQIVNALRYLNEIKPPIIHYDLKPGNILLVDGTACGEIKITDFGLSKIMDDDSYGVGDMDLTSQG
AGTYWYLPPECFVVGKEPPKISNKVDVWSVGVIFFQCLYGRKPFQHNQSQQDILQENTILKATEVQFPVK
PVVSSEAKAFIRRCCLAYRKEDRFDVHQLANDPYLLPHMRRSNSSGNLHMAGLTASPTPPSSSIITY

SGPTRTRPLEQKLISEEDLAANDILDYKDDDDKV

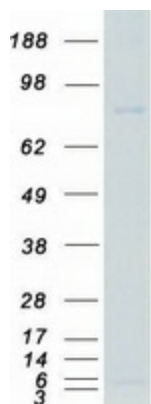
Tag:	C-Myc/DDK
Predicted MW:	86.5 kDa
Concentration:	>0.05 µg/µL as determined by microplate BCA method
Purity:	> 80% as determined by SDS-PAGE and Coomassie blue staining
Buffer:	25 mM Tris-HCl, 100 mM glycine, pH 7.3, 10% glycerol
Preparation:	Recombinant protein was captured through anti-DDK affinity column followed by conventional chromatography steps.
Note:	For testing in cell culture applications, please filter before use. Note that you may experience some loss of protein during the filtration process.
Storage:	Store at -80°C.



[View online »](#)

Stability:	Stable for 12 months from the date of receipt of the product under proper storage and handling conditions. Avoid repeated freeze-thaw cycles.
RefSeq:	<u>NP_036422</u>
Locus ID:	9874
UniProt ID:	<u>Q9UKI8</u>
RefSeq Size:	5751
Cytogenetics:	2q31.1
RefSeq ORF:	2298
Synonyms:	PKU-beta
Summary:	The protein encoded by this gene is a serine/threonine kinase that may be involved in the regulation of chromatin assembly. The encoded protein is only active when it is phosphorylated, and this phosphorylation is cell cycle-dependent, with the maximal activity of this protein coming during S phase. The catalytic activity of this protein is diminished by DNA damage and by blockage of DNA replication. Three transcript variants encoding different isoforms have been found for this gene. [provided by RefSeq, Nov 2011]
Protein Families:	Druggable Genome, Protein Kinase

Product images:



Coomassie blue staining of purified TLK1 protein (Cat# TP307653). The protein was produced from HEK293T cells transfected with TLK1 cDNA clone (Cat# [RC207653]) using MegaTran 2.0 (Cat# [TT210002]).