

## Product datasheet for **TP307629M**

### **FAM119A (METTL21A) (NM\_145280) Human Recombinant Protein**

#### Product data:

Product Type:	Recombinant Proteins
Description:	Recombinant protein of human family with sequence similarity 119, member A (FAM119A), transcript variant 1, 100 µg
Species:	Human
Expression Host:	HEK293T
Expression cDNA Clone or AA Sequence:	>RC207629 protein sequence <b>Red</b> =Cloning site <b>Green</b> =Tags(s)

MALVPYEETTEFGLQKFHKPLATFSFANHTIQIRQDWRHLGVAAVVWDAAILVSTYLEMGAVELRGRSAV  
ELGAGTGLVGIVAALLGAHVITIDRKVALEFLKSNVQANLPPHIQTKTVVKELTWGQNLGSFSPGEFDLI  
LGADIYLEETFTDLLQTLHLCSNHSVILLACRIRYERDNNFLAMLERQFIVRKVHYDPEKDVHIYEAQ  
KRNQKEDL

**TRTRPLEQKLISEEDLAANDILDYKDDDDKV**

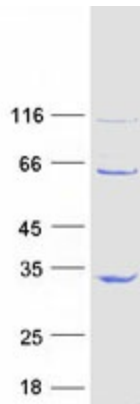
Tag:	C-Myc/DDK
Predicted MW:	24.4 kDa
Concentration:	>0.05 µg/µL as determined by microplate BCA method
Purity:	> 80% as determined by SDS-PAGE and Coomassie blue staining
Buffer:	25 mM Tris-HCl, 100 mM glycine, pH 7.3, 10% glycerol
Preparation:	Recombinant protein was captured through anti-DDK affinity column followed by conventional chromatography steps.
Note:	For testing in cell culture applications, please filter before use. Note that you may experience some loss of protein during the filtration process.
Storage:	Store at -80°C.
Stability:	Stable for 12 months from the date of receipt of the product under proper storage and handling conditions. Avoid repeated freeze-thaw cycles.
RefSeq:	<u><a href="#">NP_660323</a></u>
Locus ID:	151194



[View online »](#)

UniProt ID:	<a href="#">Q8WXB1</a>
RefSeq Size:	4748
Cytogenetics:	2q33.3
RefSeq ORF:	654
Synonyms:	FAM119A; HCA557b; HSPA-KMT
Summary:	Protein-lysine methyltransferase that selectively trimethylates residues in heat shock protein 70 (HSP70) family members. Contributes to the in vivo trimethylation of Lys residues in HSPA1 and HSPA8. In vitro methylates 'Lys-561' in HSPA1, 'Lys-564' in HSPA2, 'Lys-585' in HSPA5, 'Lys-563' in HSPA6 and 'Lys-561' in HSPA8.[UniProtKB/Swiss-Prot Function]

### Product images:



Coomassie blue staining of purified METTL21A protein (Cat# [TP307629]). The protein was produced from HEK293T cells transfected with METTL21A cDNA clone (Cat# [RC207629]) using MegaTran 2.0 (Cat# [TT210002]).