

## Product datasheet for **TP307621L**

### **DOK2 (NM\_003974) Human Recombinant Protein**

#### **Product data:**

**Product Type:** Recombinant Proteins

**Description:** Recombinant protein of human docking protein 2, 56kDa (DOK2), 1 mg

**Species:** Human

**Expression Host:** HEK293T

**Expression cDNA Clone  
or AA Sequence:** >RC207621 protein sequence  
**Red**=Cloning site **Green**=Tags(s)

MGDGAVKQGFLYLQQQTFGKKWRRFGASLYGGSDCALARLELQEGPEKPRRCEAARKVIRLSDCLRVAE  
AGGEASSPRDTSAFFLETKERLYLLAAPAAERGDWVQAICLLAFPGQRKELSGPEGKQSRPCMEENELYS  
SAVTVGPHKEFAVTMRPTEASERCHLRGSYTLRAGESALELWGGPEPGTQLYDWPYRFLRRFRGRDKVTF  
FEAGRRCVSGEGNFETRQNEIFLALAEAISAQKNAAPATPQPATIPASLPRPDSYPYRPHDSLPP  
PSPPTTPVPAPRPRGQEGEYAVPFDVAVARSLGKNFRGILAVPPQLLADPLYDSIEETLPPRPDHIYDEPEG  
VAALSLYDSPQEPRGEAWRRQATADRDPAQLQHVQPAGQDFSASGWQPGTEYDNNVLLKKGPK

**TRTRPLEQKLISEEDLAANDILDYKDDDDKV**

**Tag:** C-Myc/DDK

**Predicted MW:** 45.2 kDa

**Concentration:** >0.05 µg/µL as determined by microplate BCA method

**Purity:** > 80% as determined by SDS-PAGE and Coomassie blue staining

**Buffer:** 25 mM Tris-HCl, 100 mM glycine, pH 7.3, 10% glycerol

**Preparation:** Recombinant protein was captured through anti-DDK affinity column followed by conventional chromatography steps.

**Note:** For testing in cell culture applications, please filter before use. Note that you may experience some loss of protein during the filtration process.

**Storage:** Store at -80°C.

**Stability:** Stable for 12 months from the date of receipt of the product under proper storage and handling conditions. Avoid repeated freeze-thaw cycles.

**RefSeq:** [NP\\_003965](#)

**Locus ID:** 9046



[View online »](#)

UniProt ID: [O60496](#)

RefSeq Size: 1870

Cytogenetics: 8p21.3

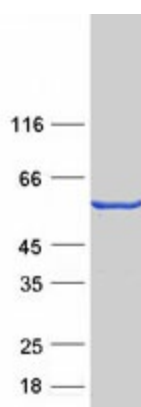
RefSeq ORF: 1236

Synonyms: p56DOK; p56dok-2

**Summary:** The protein encoded by this gene is constitutively tyrosine phosphorylated in hematopoietic progenitors isolated from chronic myelogenous leukemia (CML) patients in the chronic phase. It may be a critical substrate for p210(bcr/abl), a chimeric protein whose presence is associated with CML. This encoded protein binds p120 (RasGAP) from CML cells. [provided by RefSeq, Jul 2008]

**Protein Families:** Druggable Genome

### Product images:



Coomassie blue staining of purified DOK2 protein (Cat# [TP307621]). The protein was produced from HEK293T cells transfected with DOK2 cDNA clone (Cat# [RC207621]) using MegaTran 2.0 (Cat# [TT210002]).