

## Product datasheet for TP307621

### DOK2 (NM\_003974) Human Recombinant Protein

#### Product data:

|                                       |   |
|---------------------------------------|---|
| Product Type:                         | Recombinant Proteins  |
| Description:                          | Recombinant protein of human docking protein 2, 56kDa (DOK2), 20 µg   |
| Species:                              | Human   |
| Expression Host:                      | HEK293T   |
| Expression cDNA Clone or AA Sequence: | >RC207621 protein sequence<br><b>Red</b> =Cloning site <b>Green</b> =Tags(s)  |
|                                       | <p>MGDGAVKQGFLYLQQQTFGKKWRRFGASLYGGSDCALARLELQEGPEKPRRCEAARKVIRLSDCLRVAE<br/>AGGEASSPRDTSAFFLETKERLYLLAAPAAERGDWVQAICLLAFPGQRKELSGPEGKQSRPCMEENELYS<br/>SAVTVGPHKEFAVTMRPTEASERCHLRGSYTLRAGESALELWGGPEPGTQLYDWPYRFLRRFRGRDKVTFS<br/>FEAGRRCVSGEGNFETRQNEIFLALAEAISAQKNAAPATPQPQPATIPASLPRPDSYPYRPHDSLPP<br/>PSPPTTPVPAPRPRGQEGEYAVPFDVAVARSLGKNFRGILAVPPQLLADPLYDSIEETLPPRPDHIYDEPEG<br/>VAALSLYDSPQEPRGEAWRRQATADRDPAQLQHVPAGQDFSASGWQPGTEYDNNVLLKKGPK</p> <p><b>TRTRPLEQKLISEEDLAANDILDYKDDDDKV</b></p> |
| Tag:                                  | C-Myc/DDK   |
| Predicted MW:                         | 45.2 kDa  |
| Concentration:                        | >0.05 µg/µL as determined by microplate BCA method  |
| Purity:                               | > 80% as determined by SDS-PAGE and Coomassie blue staining   |
| Buffer:                               | 25 mM Tris-HCl, 100 mM glycine, pH 7.3, 10% glycerol  |
| Preparation:                          | Recombinant protein was captured through anti-DDK affinity column followed by conventional chromatography steps.  |
| Note:                                 | For testing in cell culture applications, please filter before use. Note that you may experience some loss of protein during the filtration process.  |
| Storage:                              | Store at -80°C.   |
| Stability:                            | Stable for 12 months from the date of receipt of the product under proper storage and handling conditions. Avoid repeated freeze-thaw cycles.   |
| RefSeq:                               | <a href="#">NP_003965</a>   |
| Locus ID:                             | 9046  |



[View online »](#)

UniProt ID: [O60496](#)

RefSeq Size: 1870

Cytogenetics: 8p21.3

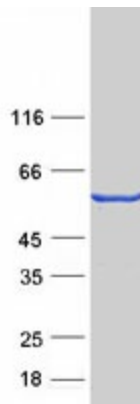
RefSeq ORF: 1236

Synonyms: p56DOK; p56dok-2

**Summary:** The protein encoded by this gene is constitutively tyrosine phosphorylated in hematopoietic progenitors isolated from chronic myelogenous leukemia (CML) patients in the chronic phase. It may be a critical substrate for p210(bcr/abl), a chimeric protein whose presence is associated with CML. This encoded protein binds p120 (RasGAP) from CML cells. [provided by RefSeq, Jul 2008]

**Protein Families:** Druggable Genome

### Product images:



Coomassie blue staining of purified DOK2 protein (Cat# TP307621). The protein was produced from HEK293T cells transfected with DOK2 cDNA clone (Cat# [RC207621]) using MegaTran 2.0 (Cat# [TT210002]).