

## Product datasheet for **TP307606M**

### SET (NM\_003011) Human Recombinant Protein

#### Product data:

Product Type:	Recombinant Proteins
Description:	Recombinant protein of human SET nuclear oncogene (SET), transcript variant 2, 100 µg
Species:	Human
Expression Host:	HEK293T
Expression cDNA Clone or AA Sequence:	>RC207606 protein sequence <b>Red</b> =Cloning site <b>Green</b> =Tags(s)
	MSAPAAKVSKKELNSNHDGADETSEKEQQEAIHIDEVQNEIDRLNEQASEEILKVEQKYNKLRQPFFQK RSELIAKIPNFWVTTFVNHPQVSALLGEEDEEALHYLTRVEVTEFEDIKSGYRIDFYFDENPYFENKVLS KEFHLNESGDPSSKSTEIKWKS GKDLTKRSSQTQNKASRKRQHEEPESFFTWFTDHS DAGADELGEVIKD DIWPNPLQYYLVPDMDDEEGEGEEDDDDDDEEEGLEIDEEGDEDEGEDEDDDEGEEGEEDEGEDD  <b>TRTRPLEQKLISEEDLAANDILDYKDDDDKV</b>
Tag:	C-Myc/DDK
Predicted MW:	31.9 kDa
Concentration:	>0.05 µg/µL as determined by microplate BCA method
Purity:	> 80% as determined by SDS-PAGE and Coomassie blue staining
Buffer:	25 mM Tris-HCl, 100 mM glycine, pH 7.3, 10% glycerol
Preparation:	Recombinant protein was captured through anti-DDK affinity column followed by conventional chromatography steps.
Note:	For testing in cell culture applications, please filter before use. Note that you may experience some loss of protein during the filtration process.
Storage:	Store at -80°C.
Stability:	Stable for 12 months from the date of receipt of the product under proper storage and handling conditions. Avoid repeated freeze-thaw cycles.
RefSeq:	<a href="#">NP_003002</a>
Locus ID:	6418
UniProt ID:	<a href="#">Q01105</a> , <a href="#">A0A024R895</a>



[View online »](#)

RefSeq Size: 2936

Cytogenetics: 9q34.11

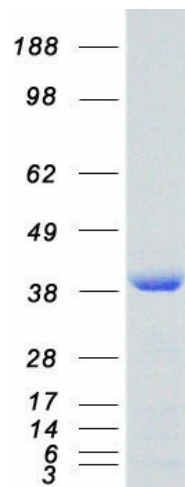
RefSeq ORF: 831

Synonyms: 2PP2A; I2PP2A; IGAAD; IPP2A2; MRD58; PHAPII; TAF-I; TAF-IBETA

**Summary:** The protein encoded by this gene inhibits acetylation of nucleosomes, especially histone H4, by histone acetylases (HAT). This inhibition is most likely accomplished by masking histone lysines from being acetylated, and the consequence is to silence HAT-dependent transcription. The encoded protein is part of a complex localized to the endoplasmic reticulum but is found in the nucleus and inhibits apoptosis following attack by cytotoxic T lymphocytes. This protein can also enhance DNA replication of the adenovirus genome. Several transcript variants encoding different isoforms have been found for this gene. [provided by RefSeq, Oct 2011]

**Protein Families:** Druggable Genome, Phosphatase, Stem cell - Pluripotency

### Product images:



Coomassie blue staining of purified SET protein (Cat# [TP307606]). The protein was produced from HEK293T cells transfected with SET cDNA clone (Cat# [RC207606]) using MegaTran 2.0 (Cat# [TT210002]).