

## Product datasheet for **TP307601**

### Somatostatin (SST) (NM\_001048) Human Recombinant Protein

#### Product data:

Product Type:	Recombinant Proteins
Description:	Recombinant protein of human somatostatin (SST), 20 µg
Species:	Human
Expression Host:	HEK293T
Expression cDNA Clone or AA Sequence:	>RC207601 representing NM_001048 <b>Red</b> =Cloning site <b>Green</b> =Tags(s)
	MLSCRLQCALAALSIVLALGCVTGAPSDPRLRQFLQKSLAAAAGKQELAKYFLAELLSEPNQTENDALEP EDLSQAAEQDEMRLQLRSANSNPAMAPRERKAGCKNFFWKTFTSC
	<b>TR</b> TRPLE <b>QKLISEEDLA</b> AND <b>ILDYKDDDDKV</b>
Tag:	C-Myc/DDK
Predicted MW:	10.3 kDa
Concentration:	>0.05 µg/µL as determined by microplate BCA method
Purity:	> 80% as determined by SDS-PAGE and Coomassie blue staining
Buffer:	25 mM Tris-HCl, 100 mM glycine, pH 7.3, 10% glycerol
Preparation:	Recombinant protein was captured through anti-DDK affinity column followed by conventional chromatography steps.
Note:	For testing in cell culture applications, please filter before use. Note that you may experience some loss of protein during the filtration process.
Storage:	Store at -80°C.
Stability:	Stable for 12 months from the date of receipt of the product under proper storage and handling conditions. Avoid repeated freeze-thaw cycles.
RefSeq:	<a href="#">NP_001039</a>
Locus ID:	6750
UniProt ID:	<a href="#">P61278</a>
RefSeq Size:	665
Cytogenetics:	3q27.3



[View online »](#)

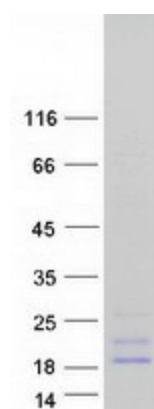
**RefSeq ORF:** 348

**Synonyms:** SMST; SST1

**Summary:** The hormone somatostatin has active 14 aa and 28 aa forms that are produced by alternate cleavage of the single preproprotein encoded by this gene. Somatostatin is expressed throughout the body and inhibits the release of numerous secondary hormones by binding to high-affinity G-protein-coupled somatostatin receptors. This hormone is an important regulator of the endocrine system through its interactions with pituitary growth hormone, thyroid stimulating hormone, and most hormones of the gastrointestinal tract. Somatostatin also affects rates of neurotransmission in the central nervous system and proliferation of both normal and tumorigenic cells. [provided by RefSeq, Jul 2008]

**Protein Families:** Druggable Genome, ES Cell Differentiation/IPS, Secreted Protein

### Product images:



Coomassie blue staining of purified SST protein (Cat# TP307601). The protein was produced from HEK293T cells transfected with SST cDNA clone (Cat# [RC207601]) using MegaTran 2.0 (Cat# [TT210002]).