

Product datasheet for **TP307588M**

Dermatopontin (DPT) (NM_001937) Human Recombinant Protein

Product data:

Product Type:	Recombinant Proteins
Description:	Recombinant protein of human dermatopontin (DPT), 100 µg
Species:	Human
Expression Host:	HEK293T
Expression cDNA Clone or AA Sequence:	>RC207588 protein sequence Red =Cloning site Green =Tags(s)
	MDLSLLWVLLPLVTMAWGQYGDYGYQYHDYSDDGWVNLNRQGFQSYQCPQGQVIVAVRSIFSFKKEGSD RQWNYACMPTPQSLGEPTECWWEIINRAGMEWYQTCNNGLVAGFQSRYSVLDREWQFYCCRYSKRCP YSCWLTIEYPGHYGEEMDMISYNYDYIRGATTTFAVERDRQWKFIMCRMTEYDCEFANV TRTRPLEQKLISEEDLAANDILDYKDDDDKV
Tag:	C-Myc/DDK
Predicted MW:	21.9 kDa
Concentration:	>0.05 µg/µL as determined by microplate BCA method
Purity:	> 80% as determined by SDS-PAGE and Coomassie blue staining
Buffer:	25 mM Tris-HCl, 100 mM glycine, pH 7.3, 10% glycerol
Preparation:	Recombinant protein was captured through anti-DDK affinity column followed by conventional chromatography steps.
Note:	For testing in cell culture applications, please filter before use. Note that you may experience some loss of protein during the filtration process.
Storage:	Store at -80°C.
Stability:	Stable for 12 months from the date of receipt of the product under proper storage and handling conditions. Avoid repeated freeze-thaw cycles.
RefSeq:	NP_001928
Locus ID:	1805
UniProt ID:	Q07507
RefSeq Size:	1749



[View online »](#)

Cytogenetics: 1q24.2

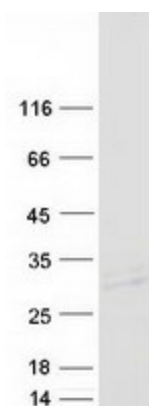
RefSeq ORF: 603

Synonyms: TRAMP

Summary: Dermatopontin is an extracellular matrix protein with possible functions in cell-matrix interactions and matrix assembly. The protein is found in various tissues and many of its tyrosine residues are sulphated. Dermatopontin is postulated to modify the behavior of TGF-beta through interaction with decorin. [provided by RefSeq, Jul 2008]

Protein Families: Secreted Protein

Product images:



Coomassie blue staining of purified DPT protein (Cat# [TP307588]). The protein was produced from HEK293T cells transfected with DPT cDNA clone (Cat# [RC207588]) using MegaTran 2.0 (Cat# [TT210002]).