

## Product datasheet for **TP307585**

### FCER1G (NM\_004106) Human Recombinant Protein

#### Product data:

Product Type:	Recombinant Proteins
Description:	Recombinant protein of human Fc fragment of IgE, high affinity I, receptor for; gamma polypeptide (FCER1G), 20 µg
Species:	Human
Expression Host:	HEK293T
Expression cDNA Clone or AA Sequence:	>Peptide sequence encoded by RC207585 <b>Blue</b> =ORF <b>Red</b> =Cloning site <b>Green</b> =Tag(s)  MIPAWLLLLLLVEQAAALGEPQLCYILDAILFLYGIVLTLLYCRLKVIQVRKAAITSYEKSDGVYTG STRNQETYETLKHEKPPQ TRTRPLEQKLISEEDLAANDILDYKDDDDKV  Recombinant protein using RC207585 also available, <a href="#">TP307585</a>
Tag:	C-Myc/DDK
Predicted MW:	7.8 kDa
Concentration:	>0.05 µg/µL as determined by microplate BCA method
Purity:	> 80% as determined by SDS-PAGE and Coomassie blue staining
Buffer:	25 mM Tris-HCl, 100 mM glycine, pH 7.3, 10% glycerol
Preparation:	Recombinant protein was captured through anti-DDK affinity column followed by conventional chromatography steps.
Note:	For testing in cell culture applications, please filter before use. Note that you may experience some loss of protein during the filtration process.
Storage:	Store at -80°C.
Stability:	Stable for 12 months from the date of receipt of the product under proper storage and handling conditions. Avoid repeated freeze-thaw cycles.
RefSeq:	<a href="#">NP_004097</a>
Locus ID:	2207
UniProt ID:	<a href="#">P30273</a>



[View online »](#)

RefSeq Size: 591

Cytogenetics: 1q23.3

RefSeq ORF: 261

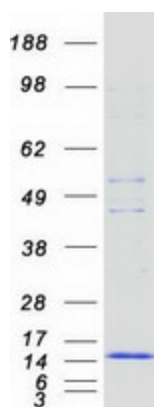
Synonyms: FCRG

**Summary:** The high affinity IgE receptor is a key molecule involved in allergic reactions. It is a tetramer composed of 1 alpha, 1 beta, and 2 gamma chains. The gamma chains are also subunits of other Fc receptors. [provided by RefSeq, Jul 2008]

**Protein Families:** Transmembrane

**Protein Pathways:** Asthma, Fc epsilon RI signaling pathway, Natural killer cell mediated cytotoxicity

### Product images:



Coomassie blue staining of purified FCER1G protein (Cat# TP307585). The protein was produced from HEK293T cells transfected with FCER1G cDNA clone (Cat# [RC207585]) using MegaTran 2.0 (Cat# [TT210002]).