

Product datasheet for **TP307561M**

Peripherin (PRPH) (NM_006262) Human Recombinant Protein

Product data:

Product Type:	Recombinant Proteins
Description:	Recombinant protein of human peripherin (PRPH), 100 µg
Species:	Human
Expression Host:	HEK293T
Expression cDNA Clone or AA Sequence:	>RC207561 protein sequence Red =Cloning site Green =Tags(s)

MSHHPSGLRAGFSSTSYRRTFGPPPSLSPGAFSYSSSRFSSSRLGASPPSSVRLGFSFRSPRAGAGAL
LRLPSERLDFSMAEALNQEFLATRSNEKQELQELNDRFANFIEKVRFLFLEQQNAALRGELSQARGQEPARA
DQLCQQLRELRRLELLGRERDRVQVERDGLAEDLAALKQRLEEETRKREDAEHNLVLFKRDVDDATLS
RLELERKIESLMDEIEFLKKLHEEELRDLQVSVESQQVQVEVEATVKPELTAALRDIRAQYESIAAKNL
QEAEWYKSKYADLSAANRNHEALRQAKQEMNESRRQIQSLTCEVDGLRGTNEALLRQLRELEEQFALE
AGGYQAGAARLEELRQLKEEMARHLREYQELLNVKMALDIEIATYRKLLEGEESRISVPVHSFASLNIK
TTVPEVEPPQDSHSRKTVLIKTIETRNGEVVTESQKEQRSELDKSSAHSY

TRTRPLEQKLISEEDLAANDILDYKDDDDKV

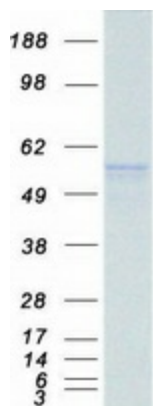
Tag:	C-Myc/DDK
Predicted MW:	53.5 kDa
Concentration:	>0.05 µg/µL as determined by microplate BCA method
Purity:	> 80% as determined by SDS-PAGE and Coomassie blue staining
Buffer:	25 mM Tris-HCl, 100 mM glycine, pH 7.3, 10% glycerol
Preparation:	Recombinant protein was captured through anti-DDK affinity column followed by conventional chromatography steps.
Note:	For testing in cell culture applications, please filter before use. Note that you may experience some loss of protein during the filtration process.
Storage:	Store at -80°C.
Stability:	Stable for 12 months from the date of receipt of the product under proper storage and handling conditions. Avoid repeated freeze-thaw cycles.
RefSeq:	<u>NP_006253</u>



[View online »](#)

Locus ID:	5630
UniProt ID:	P41219 , B3KWQ6
RefSeq Size:	1833
Cytogenetics:	12q13.12
RefSeq ORF:	1410
Synonyms:	NEF4; PRPH1
Summary:	This gene encodes a cytoskeletal protein found in neurons of the peripheral nervous system. The encoded protein is a type III intermediate filament protein with homology to other cytoskeletal proteins such as desmin, and is a different protein than the peripherin found in photoreceptors. Mutations in this gene have been associated with susceptibility to amyotrophic lateral sclerosis. [provided by RefSeq, Jul 2008]
Protein Pathways:	Amyotrophic lateral sclerosis (ALS)

Product images:



Coomassie blue staining of purified PRPH protein (Cat# [TP307561]). The protein was produced from HEK293T cells transfected with PRPH cDNA clone (Cat# [RC207561]) using MegaTran 2.0 (Cat# [TT210002]).