

## Product datasheet for **TP307557L**

### **FGL2 (NM\_006682) Human Recombinant Protein**

#### **Product data:**

**Product Type:** Recombinant Proteins

**Description:** Recombinant protein of human fibrinogen-like 2 (FGL2), 1 mg

**Species:** Human

**Expression Host:** HEK293T

**Expression cDNA** >RC207557 protein sequence

**Clone or AA** **Red**=Cloning site **Green**=Tags(s)

**Sequence:**

MKLANWYWLSSAVLATYGFLVANNETEEIKDERAKDVCVRLESRGKCEEAGECPYQVSLPPLTIQLPK  
QFSRIEEVFKEVQNLKEIVNSLKKSCQDCKLQADDNGDPGRNGLLLPSTGAPGEVGDNRVRELESEVNKL  
SSELKNAKEEINVLHGRLEKLNLVNMNNIENYVDSKVANLTFVNSLDGKCSKPSQEQISRPVQHLY  
KDCSDYYAIGKRSSETYRVTPDPKNSSFVYCDMETMGGGWTVLQARLDGSTNFRTRWQDYKAGFGNLR  
EFWLGNDKIHLLTKSKEMILRIDLEDFNGVELYALYDQFVANEFKYLRLHVGNYNGTAGDALRFNKHYN  
HDLKFFTPDKDNDRYPSGNCGLYSSGWWFDACLSANLNGKYYHQKYRGVRNGIFWGTWPGVSEAHPPG  
YKSSFKEAKMMIRPKHFKP

**TRTRPLEQKLISEEDLAANDILDYKDDDDKV**

**Tag:** C-Myc/DDK

**Predicted MW:** 47.6 kDa

**Concentration:** >0.1 µg/µL as determined by microplate BCA method

**Purity:** > 80% as determined by SDS-PAGE and Coomassie blue staining

**Buffer:** 25 mM Tris-HCl, 100 mM glycine, pH 7.3, 10% glycerol

**Preparation:** Recombinant protein was captured through anti-DDK affinity column followed by conventional chromatography steps.

**Note:** For testing in cell culture applications, please filter before use. Note that you may experience some loss of protein during the filtration process.

**Storage:** Store at -80°C.

**Stability:** Stable for 12 months from the date of receipt of the product under proper storage and handling conditions. Avoid repeated freeze-thaw cycles.

**RefSeq:** [NP\\_006673](#)



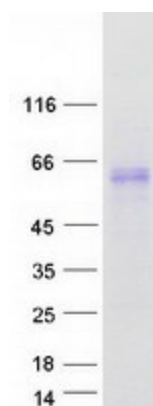
[View online »](#)

Locus ID: 10875  
UniProt ID: [Q14314](#), [A4D1B8](#)  
RefSeq Size: 4268  
Cytogenetics: 7q11.23  
RefSeq ORF: 1317  
Synonyms: pT49; T49

**Summary:** The protein encoded by this gene is a secreted protein that is similar to the beta- and gamma-chains of fibrinogen. The carboxyl-terminus of the encoded protein consists of the fibrinogen-related domains (FRED). The encoded protein forms a tetrameric complex which is stabilized by interchain disulfide bonds. This protein may play a role in physiologic functions at mucosal sites. [provided by RefSeq, Jul 2008]

**Protein Families:** Druggable Genome, Secreted Protein

### Product images:



Coomassie blue staining of purified FGL2 protein (Cat# [TP307557]). The protein was produced from HEK293T cells transfected with FGL2 cDNA clone (Cat# [RC207557]) using MegaTran 2.0 (Cat# [TT210002]).