

## Product datasheet for TP307550M

### DNA Polymerase iota (POLI) (NM\_007195) Human Recombinant Protein

#### Product data:

Product Type:	Recombinant Proteins
Description:	Recombinant protein of human polymerase (DNA directed) iota (POLI), 100 µg
Species:	Human
Expression Host:	HEK293T
Expression cDNA Clone or AA Sequence:	>RC207550 protein sequence Red=Cloning site Green=Tags(s)

MELADVGAASSQGVHDQVLPNASSRVIVHVDLDCFYAQVEMISNPELKDKPLGVQQKYLWTCNYEAR  
RKLGVKLMNVRDAKEKCPQLVLVNGEDLTRYREMSYKVTLEEFSPVVERLGFDENFVDLTEMVEKRL  
QQLSDELAVTVSGHVYNNQINLLDVLHIRLLVGSQIAAEMREAMYNQLGLTGCAGVASNKLLAKLVS  
GVFKPNQQTVLLPESCQHLSLNHIKEIPGIGYKTAKCLEALGINSVRDLQTFSPKILEKELGISVAQR  
IQKLSFGEDNSPVILSGPPQSFSEEDSFKKCSSEVEAKNIEELLASLLNRVCQDGRKPHTVRLIIRRY  
SEKHYGRESRQCPIPSHVIQKLTGNYDVMTPMVDILMKLFRNMVNVKMPFHLTLLSVCFCNLKALNTAK  
KGLIDYYLMPSLSTTSRSGKHSFKMKDTHMEDFPKDKETNRDFLPSGRIESTRTRESPLDTTNFSKEKDI  
NEFPLCSLPEGVDQEVFKQLPVDIQEILSGKSREKFGKGSVSCPLHASRGVLSFFSKKQMQDIPINPR  
DHLSSKQVSSVSPCEPGTSGFNSSSSSYMSSQKDYSYYLDNRKDERISQGPKEPQGFHFTNSNPAVSA  
FHSFNLQSEQLFSRNHTTDSHKQTVATDSHEGLTENREPDVDEKIFPSDIDPQVFYELPEAVQKELL  
AEWKRAGSDFHGHK

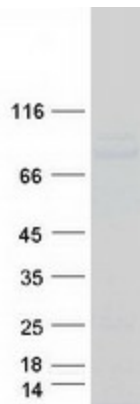
TRTRPLEQKLISEEDLAANDILDYKDDDDKV

Tag:	C-Myc/DDK
Predicted MW:	82.8 kDa
Concentration:	>0.05 µg/µL as determined by microplate BCA method
Purity:	> 80% as determined by SDS-PAGE and Coomassie blue staining
Buffer:	25 mM Tris-HCl, 100 mM glycine, pH 7.3, 10% glycerol
Preparation:	Recombinant protein was captured through anti-DDK affinity column followed by conventional chromatography steps.
Note:	For testing in cell culture applications, please filter before use. Note that you may experience some loss of protein during the filtration process.
Storage:	Store at -80°C.



[View online »](#)

<b>Stability:</b>	Stable for 12 months from the date of receipt of the product under proper storage and handling conditions. Avoid repeated freeze-thaw cycles.
<b>RefSeq:</b>	<a href="#">NP_009126</a>
<b>Locus ID:</b>	11201
<b>UniProt ID:</b>	<a href="#">Q9UNA4</a>
<b>RefSeq Size:</b>	6074
<b>Cytogenetics:</b>	18q21.2
<b>RefSeq ORF:</b>	2145
<b>Synonyms:</b>	eta2; RAD3OB; RAD30B
<b>Summary:</b>	The protein encoded by this gene is an error-prone DNA polymerase involved in DNA repair. The encoded protein promotes DNA synthesis across lesions in the template DNA, which other polymerases cannot do. The encoded polymerase inserts deoxynucleotides across lesions and then relies on DNA polymerase zeta to extend the nascent DNA strand to bypass the lesion. [provided by RefSeq, May 2017]
<b>Protein Families:</b>	Druggable Genome

**Product images:**

Coomassie blue staining of purified POLI protein (Cat# [TP307550]). The protein was produced from HEK293T cells transfected with POLI cDNA clone (Cat# [RC207550]) using MegaTran 2.0 (Cat# [TT210002]).