

Product datasheet for TP307550L

DNA Polymerase iota (POLI) (NM_007195) Human Recombinant Protein

Product data:

Product Type:	Recombinant Proteins
Description:	Recombinant protein of human polymerase (DNA directed) iota (POLI), 1 mg
Species:	Human
Expression Host:	HEK293T
Expression cDNA Clone or AA Sequence:	>RC207550 protein sequence Red=Cloning site Green=Tags(s)

MELADVGAASSQGVHDQVLPNASSRVIVHVDLDCFYAQVEMISNPELKDKPLGVQQKYLVWTCNYEAR
RKLGVKLMNVRDAKEKCPQLVLVNGEDLTRYREMSYKVTLEEFSPVVERLGFDENFVDLTEMVEKRL
QQLQSDLSAVTVSGHVYNNQINLLDVLHIRLLVGSQIAAEMREAMYNQLGLTGCAGVASNKLLAKLVS
GVFKPNQQTVLLPESCQHLSLNHIKEIPGIGYKTAKCLEALGINSVRDLQTFSPKILEKELGISVAQR
IQKLSFGEDNSPVILSGPPQSFSEEDSFKKCSSEVEAKNIEELLASLLNRVCQDGRKPHTVRLIIRRY
SEKHYGRESRQCPIPSHVIQKLTGNYDVMTPMVDILMKLFRNMVNVKMPFHLTLLSVCFCNLKALNTAK
KGLIDYYLMPSLSTTSRSGKHSFKMKDTHMEDFPKDKETNRDFLPSGRIESTRTRESPLDTTNSKEKDI
NEFPLCSLPEGVDQEVFKQLPVDIQEILSGKSREKFQGGKGSVSCPLHASRGVLSFFSKKQMQDIPINPR
DHLSSKQVSSVSPCEPGTSGFNSSSSSYMSSQKDYSYYLDNRKDERISQGPKEPQGFHFTNSNPAVSA
FHSFNLQSEQLFSRNHTTDSHKQTVATDSHEGLTENREPDVDEKITFPSDIDPQVFYELPEAVQKELL
AEWKRAGSDFHGHK

TRTRPLEQKLISEEDLAANDILDYKDDDDKV

Tag:	C-Myc/DDK
Predicted MW:	82.8 kDa
Concentration:	>0.05 µg/µL as determined by microplate BCA method
Purity:	> 80% as determined by SDS-PAGE and Coomassie blue staining
Buffer:	25 mM Tris-HCl, 100 mM glycine, pH 7.3, 10% glycerol
Preparation:	Recombinant protein was captured through anti-DDK affinity column followed by conventional chromatography steps.
Note:	For testing in cell culture applications, please filter before use. Note that you may experience some loss of protein during the filtration process.
Storage:	Store at -80°C.



[View online »](#)

Stability: Stable for 12 months from the date of receipt of the product under proper storage and handling conditions. Avoid repeated freeze-thaw cycles.

RefSeq: [NP_009126](#)

Locus ID: 11201

UniProt ID: [Q9UNA4](#)

RefSeq Size: 6074

Cytogenetics: 18q21.2

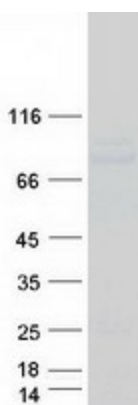
RefSeq ORF: 2145

Synonyms: eta2; RAD3OB; RAD30B

Summary: The protein encoded by this gene is an error-prone DNA polymerase involved in DNA repair. The encoded protein promotes DNA synthesis across lesions in the template DNA, which other polymerases cannot do. The encoded polymerase inserts deoxynucleotides across lesions and then relies on DNA polymerase zeta to extend the nascent DNA strand to bypass the lesion. [provided by RefSeq, May 2017]

Protein Families: Druggable Genome

Product images:



Coomassie blue staining of purified POLI protein (Cat# [TP307550]). The protein was produced from HEK293T cells transfected with POLI cDNA clone (Cat# [RC207550]) using MegaTran 2.0 (Cat# [TT210002]).