

## Product datasheet for **TP307549M**

### Centaurin alpha 1 (ADAP1) (NM\_006869) Human Recombinant Protein

#### Product data:

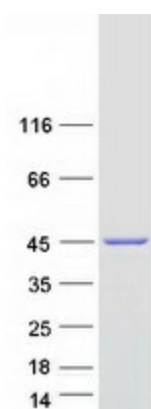
Product Type:	Recombinant Proteins
Description:	Recombinant protein of human ArfGAP with dual PH domains 1 (ADAP1), 100 µg
Species:	Human
Expression Host:	HEK293T
Expression cDNA Clone or AA Sequence:	>RC207549 representing NM_006869 <b>Red</b> =Cloning site <b>Green</b> =Tags(s)
	 MAKERRRAVLELLQRPGNARCADCGAPDPDWASYTLGVFICLSCSGIHRNIPQVSKVKSRLDAWEEAQV EFMASHGNDAAARARFESKVP SFYYRPTPSDCQLLREQWIRAKYERQEFIYPEKQEPYSAGYREGFLWKRG RDNGQFLSRKFVLTREGALKYFNRNDAKEPKAVMKIEHLNATFQPAKIGHPHGLQVTYLKDNSTRNIFI YHEDGKEIVDFNALRAARFHYLQVAFPGASDADLVPKLSRNYLKEGYMEKTGPKQTEGFRKRWFTMDDR RLMYFKDPLDAFARGEVFIGSKESGYTVLHGFPPSTQGHHPHGITIVTPDRKFLFACETESDQREWAA FQKAVDRPMLPQEYAVEAHFKHKP  <b>TRTRPLEQKLISEEDLAANDILDYKDDDDKV</b>
Tag:	C-Myc/DDK
Predicted MW:	43.2 kDa
Concentration:	>0.05 µg/µL as determined by microplate BCA method
Purity:	> 80% as determined by SDS-PAGE and Coomassie blue staining
Buffer:	25 mM Tris-HCl, 100 mM glycine, pH 7.3, 10% glycerol
Preparation:	Recombinant protein was captured through anti-DDK affinity column followed by conventional chromatography steps.
Note:	For testing in cell culture applications, please filter before use. Note that you may experience some loss of protein during the filtration process.
Storage:	Store at -80°C.
Stability:	Stable for 12 months from the date of receipt of the product under proper storage and handling conditions. Avoid repeated freeze-thaw cycles.
RefSeq:	<a href="#">NP_006860</a>
Locus ID:	11033



[View online »](#)

UniProt ID:	<a href="#">O75689</a>
RefSeq Size:	2378
Cytogenetics:	7p22.3
RefSeq ORF:	1122
Synonyms:	CENTA1; GCS1L; p42IP4
Summary:	GTPase-activating protein for the ADP ribosylation factor family (Probable). Binds phosphatidylinositol 3,4,5-trisphosphate (PtdInsP3) and inositol 1,3,4,5-tetrakisphosphate (InsP4).[UniProtKB/Swiss-Prot Function]
Protein Families:	Druggable Genome

### Product images:



Coomassie blue staining of purified ADAP1 protein (Cat# [TP307549]). The protein was produced from HEK293T cells transfected with ADAP1 cDNA clone (Cat# [RC207549]) using MegaTran 2.0 (Cat# [TT210002]).