

Product datasheet for **TP307548M**

DDAH1 (NM_012137) Human Recombinant Protein

Product data:

Product Type: Recombinant Proteins

Description: Recombinant protein of human dimethylarginine dimethylaminohydrolase 1 (DDAH1), transcript variant 1, 100 µg

Species: Human

Expression Host: HEK293T

Expression cDNA Clone or AA Sequence: >RC207548 protein sequence
Red=Cloning site **Green**=Tags(s)

MAGLGHPAAFGRATHAVVRALPESLGQHALRSAKGEEVDVARAERQHQLYVGVLGSKLGLQWELPADES
LPDCVFVEDVAVVCEETALITRPGAPSRKEVDMMKEALEKLQLNIVEMKDENATLDGGDVLFTGREFFV
GLSKRTNQRGAELADTFKDYAVSTVPVADGLHLKSFCSMAGPNLIAIGSSESAQKALKIMQQMSDHRDY
KLTVPDDIAANCIYLNIPNKGHVLLHRTPEEYPESAKVYEKLDHMLIPVSMSELEKVDGLLTCCSVLIN
KKVDS

TRTRPLEQKLISEEDLAANDILDYKDDDDKV

Tag: C-Myc/DDK

Predicted MW: 30.9 kDa

Concentration: >0.05 µg/µL as determined by microplate BCA method

Purity: > 80% as determined by SDS-PAGE and Coomassie blue staining

Buffer: 25 mM Tris-HCl, 100 mM glycine, pH 7.3, 10% glycerol

Preparation: Recombinant protein was captured through anti-DDK affinity column followed by conventional chromatography steps.

Note: For testing in cell culture applications, please filter before use. Note that you may experience some loss of protein during the filtration process.

Storage: Store at -80°C.

Stability: Stable for 12 months from the date of receipt of the product under proper storage and handling conditions. Avoid repeated freeze-thaw cycles.

RefSeq: [NP_036269](#)

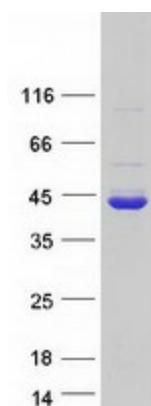
Locus ID: 23576



[View online »](#)

UniProt ID:	O94760 , B2R644
RefSeq Size:	3991
Cytogenetics:	1p22.3
RefSeq ORF:	855
Synonyms:	DDAH; DDAH-1; DDAHI; HEL-S-16
Summary:	This gene belongs to the dimethylarginine dimethylaminohydrolase (DDAH) gene family. The encoded enzyme plays a role in nitric oxide generation by regulating cellular concentrations of methylarginines, which in turn inhibit nitric oxide synthase activity. [provided by RefSeq, Jul 2008]

Product images:



Coomassie blue staining of purified DDAH1 protein (Cat# [TP307548]). The protein was produced from HEK293T cells transfected with DDAH1 cDNA clone (Cat# [RC207548]) using MegaTran 2.0 (Cat# [TT210002]).