

Product datasheet for **TP307548L**

DDAH1 (NM_012137) Human Recombinant Protein

Product data:

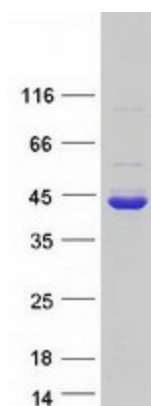
Product Type:	Recombinant Proteins
Description:	Recombinant protein of human dimethylarginine dimethylaminohydrolase 1 (DDAH1), transcript variant 1, 1 mg
Species:	Human
Expression Host:	HEK293T
Expression cDNA Clone or AA Sequence:	>RC207548 protein sequence Red =Cloning site Green =Tags(s)
	<p>MAGLGHPAAFGRATHAVVRALPESLGQHALRSAKGEEVDVARAERQHQLYVGVLGSKLGLQWELPADES LPDCVFVEDVAVVCEETALITRPGAPSRREKVDMMKEALEKLQLNIVEMKDENATLDGGDVLFTGREFFV GLSKRTNQRGAELADTFKDYAVSTVPVADGLHLKSFCSMAGPNLIAIGSSESAQKALKIMQQMSDHRVD KLTVPDDIAANCIYLNIPNKGHVLLHRTPEEYPESAKVYEKLDHMLIPVSMSELEKVDGLLTCCSVLIN KKVDS</p> <p>TRTRPLEQKLISEEDLAANDILDYKDDDDKV</p>
Tag:	C-Myc/DDK
Predicted MW:	30.9 kDa
Concentration:	>0.05 µg/µL as determined by microplate BCA method
Purity:	> 80% as determined by SDS-PAGE and Coomassie blue staining
Buffer:	25 mM Tris-HCl, 100 mM glycine, pH 7.3, 10% glycerol
Preparation:	Recombinant protein was captured through anti-DDK affinity column followed by conventional chromatography steps.
Note:	For testing in cell culture applications, please filter before use. Note that you may experience some loss of protein during the filtration process.
Storage:	Store at -80°C.
Stability:	Stable for 12 months from the date of receipt of the product under proper storage and handling conditions. Avoid repeated freeze-thaw cycles.
RefSeq:	NP_036269
Locus ID:	23576



[View online »](#)

UniProt ID:	O94760 , B2R644
RefSeq Size:	3991
Cytogenetics:	1p22.3
RefSeq ORF:	855
Synonyms:	DDAH; DDAH-1; DDAHI; HEL-S-16
Summary:	This gene belongs to the dimethylarginine dimethylaminohydrolase (DDAH) gene family. The encoded enzyme plays a role in nitric oxide generation by regulating cellular concentrations of methylarginines, which in turn inhibit nitric oxide synthase activity. [provided by RefSeq, Jul 2008]

Product images:



Coomassie blue staining of purified DDAH1 protein (Cat# [TP307548]). The protein was produced from HEK293T cells transfected with DDAH1 cDNA clone (Cat# [RC207548]) using MegaTran 2.0 (Cat# [TT210002]).