

## Product datasheet for **TP307546L**

### Calcium independent Phospholipase A2 (PLA2G6) (NM\_003560) Human Recombinant Protein

#### Product data:

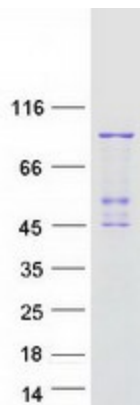
Product Type:	Recombinant Proteins
Description:	Recombinant protein of human phospholipase A2, group VI (cytosolic, calcium-independent) (PLA2G6), transcript variant 1, 1 mg
Species:	Human
Expression Host:	HEK293T
Expression cDNA Clone or AA Sequence:	>RC207546 representing NM_003560 Red=Cloning site Green=Tags(s)
	<p>MQFFGRLVNTFSGVTNLFSPNFRVKEVAVADYTSSDRVREEGQLILFQNTPNRTWDCVLVNPRNSQSGFR LFQLELEADALVNFHQYSSQLLPFYESSPQVLHTEVLQHLLDLIRNHPWSVAHLAVELGIRECFHHSRI ISCANCAENEEGCTPLHLACRKGDEILVELVQYCHTQMDVTDYKGETVFHYAVQGDNSQVLQLLGRNAV AGLNQVNNQGLTPLHLACQLGKQEMVRVLLLCNARCINIMGPNGYPIHSAMKFSQKGAEMIISMDSSQIH SKDPRYGASPLHWAKNAEMARMMLLKRCNVNSTSSAGNTALHVAVMRNRFDCAIVLLTHGANADARGEHG NTPLHLAMSKDNVEMIKALIVFGAEVDTPNDFGETPTFLASKIGRLVTRKAILLLRTVGAEYCFPIHG VPAEQGSAAPHPFLSERAQPPPISLNNLELQDLMHISRARKPAFILGSMRDEKRTDHLLCLDGGGVKG LIIQLLIAIEKASGVATKDLFDVWAGTSTGGILALAILHSMAYMRGMYFRMKDEVFRGSRPYESGPL EEFLKREFGEHTKMTDVRKPKVMLTGTLSDRQPAELHLFRNYDAPETVREPRFNQNVNLRPPAQPSDQLV WRAARSSGAAPTYFRPNRFLDGGLLANNPTLDAMTEIHEYNQDLIRKQGANKVKKLSIVVSLGTGRSPQ VPVTCVDVFRPSNPWELAKTVFGAKELGKMVDCCTDPDGRAVDRARAWCEMVGIQYFRLNPQLGTDIML DEVSDTVLVNALWETEVIYEHREEFQKLIQLLLSP</p> <p>TRTRPLEQKLISEEDLAANDILDYKDDDDKV</p>
Tag:	C-Myc/DDK
Predicted MW:	89.7 kDa
Concentration:	>0.05 µg/µL as determined by microplate BCA method
Purity:	> 80% as determined by SDS-PAGE and Coomassie blue staining
Buffer:	25 mM Tris-HCl, 100 mM glycine, pH 7.3, 10% glycerol
Preparation:	Recombinant protein was captured through anti-DDK affinity column followed by conventional chromatography steps.



[View online »](#)

<b>Note:</b>	For testing in cell culture applications, please filter before use. Note that you may experience some loss of protein during the filtration process.
<b>Storage:</b>	Store at -80°C.
<b>Stability:</b>	Stable for 12 months from the date of receipt of the product under proper storage and handling conditions. Avoid repeated freeze-thaw cycles.
<b>RefSeq:</b>	<a href="#">NP_003551</a>
<b>Locus ID:</b>	8398
<b>UniProt ID:</b>	<a href="#">O60733</a>
<b>RefSeq Size:</b>	3239
<b>Cytogenetics:</b>	22q13.1
<b>RefSeq ORF:</b>	2418
<b>Synonyms:</b>	Cal-PLA2; GVI; INAD1; iPLA2; IPLA2-VIA; iPLA2beta; NBIA2; NBIA2A; NBIA2B; PARK14; PLA2; PNPLA9
<b>Summary:</b>	The protein encoded by this gene is an A2 phospholipase, a class of enzyme that catalyzes the release of fatty acids from phospholipids. The encoded protein may play a role in phospholipid remodelling, arachidonic acid release, leukotriene and prostaglandin synthesis, fas-mediated apoptosis, and transmembrane ion flux in glucose-stimulated B-cells. Several transcript variants encoding multiple isoforms have been described, but the full-length nature of only three of them have been determined to date. [provided by RefSeq, Dec 2010]
<b>Protein Pathways:</b>	alpha-Linolenic acid metabolism, Arachidonic acid metabolism, Ether lipid metabolism, Fc epsilon RI signaling pathway, Fc gamma R-mediated phagocytosis, Glycerophospholipid metabolism, GnRH signaling pathway, Linoleic acid metabolism, Long-term depression, MAPK signaling pathway, Metabolic pathways, Vascular smooth muscle contraction, VEGF signaling pathway

### Product images:



Coomassie blue staining of purified PLA2G6 protein (Cat# [TP307546]). The protein was produced from HEK293T cells transfected with PLA2G6 cDNA clone (Cat# [RC207546]) using MegaTran 2.0 (Cat# [TT210002]).