

Product datasheet for **TP307540L**

BST2 (NM_004335) Human Recombinant Protein

Product data:

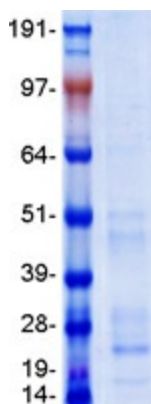
Product Type:	Recombinant Proteins
Description:	Recombinant protein of human bone marrow stromal cell antigen 2 (BST2), 1 mg
Species:	Human
Expression Host:	HEK293T
Expression cDNA Clone or AA Sequence:	>RC207540 protein sequence Red =Cloning site Green =Tags(s)
	MASTSYDYCRVPMEDGDKRCKLLLIGILVLLIIVILGVPLIIFTIKANSEACRDGLRAVMECRNVTHLL QQELTEAQKGFQDVEAQAATCNHTVMALMASLDAEKAQGQKKVEELEGEITTLNHKLQDASAEVERLRRE NQVLSVRIADKKYYPSSQDSSSAAAPQLLIVLLGLSALLQ
	SGP TRTRPLEQKLISEEDLAANDILDYKDDDDKV
Tag:	C-Myc/DDK
Predicted MW:	19.6 kDa
Concentration:	>0.05 µg/µL as determined by microplate BCA method
Purity:	> 80% as determined by SDS-PAGE and Coomassie blue staining
Buffer:	25 mM Tris-HCl, 100 mM glycine, pH 7.3, 10% glycerol
Preparation:	Recombinant protein was captured through anti-DDK affinity column followed by conventional chromatography steps.
Note:	For testing in cell culture applications, please filter before use. Note that you may experience some loss of protein during the filtration process.
Storage:	Store at -80°C.
Stability:	Stable for 12 months from the date of receipt of the product under proper storage and handling conditions. Avoid repeated freeze-thaw cycles.
RefSeq:	<u>NP_004326</u>
Locus ID:	684
UniProt ID:	<u>Q10589</u> , <u>A0A024R7H5</u>
RefSeq Size:	1048



[View online »](#)

Cytogenetics:	19p13.11
RefSeq ORF:	540
Synonyms:	CD317; HM1.24; TETHERIN
Summary:	Bone marrow stromal cells are involved in the growth and development of B-cells. The specific function of the protein encoded by the bone marrow stromal cell antigen 2 is undetermined; however, this protein may play a role in pre-B-cell growth and in rheumatoid arthritis. [provided by RefSeq, Jul 2008]
Protein Families:	Druggable Genome, ES Cell Differentiation/IPS, Transmembrane

Product images:



Coomassie blue staining of purified BST2 protein (Cat# [TP307540]). The protein was produced from HEK293T cells transfected with BST2 cDNA clone (Cat# [RC207540]) using MegaTran 2.0 (Cat# [TT210002]).