

## Product datasheet for TP307523L

### KLF15 (NM\_014079) Human Recombinant Protein

#### Product data:

Product Type:	Recombinant Proteins
Description:	Recombinant protein of human Kruppel-like factor 15 (KLF15), 1 mg
Species:	Human
Expression Host:	HEK293T
Expression cDNA Clone or AA Sequence:	>RC207523 protein sequence Red=Cloning site Green=Tags(s)
	MVDHLLPVDENFSSPKCPVGYLGDRLVGRRAYHMLPSPVSEDDSDASSPCSCSSPDSQALCSCYGGGLGT ESQDSILDFLLSQATLGSGGGSGSSIGASSGPVAWGPWRRAAAPVKGEHFCLPEFPLGDPDDVPRPFQPT LEEIEEFLEENMEPGVKEVPEGNSKDLDACSQLSAGPHKSHLHPGSSGRERCSPPPGGASAGGAQGPGGG PTPDGPIPVLLQIQVPVKQESGTGPASPGQAPENVKVAQLLVNIQGGQTFALVPQVWPSSNLNLPSKFVR IAPVPIAAKPVGSGPLGPGPAGLLMGQKFPKNPAAELIKMHKCTFPGCSKMYTKSSHKAHLRRHTGEKP FACTWPGCGWRFSRSDELSRHRRSHSGVKPYQCPVCEKKFARSDHLSKHIVHRFPRSSRSVRSVN
	TRTRPLEQKLISEEDLAANDILDYKDDDDKV
Tag:	C-Myc/DDK
Predicted MW:	43.8 kDa
Concentration:	>0.05 µg/µL as determined by microplate BCA method
Purity:	> 80% as determined by SDS-PAGE and Coomassie blue staining
Buffer:	25 mM Tris-HCl, 100 mM glycine, pH 7.3, 10% glycerol
Preparation:	Recombinant protein was captured through anti-DDK affinity column followed by conventional chromatography steps.
Note:	For testing in cell culture applications, please filter before use. Note that you may experience some loss of protein during the filtration process.
Storage:	Store at -80°C.
Stability:	Stable for 12 months from the date of receipt of the product under proper storage and handling conditions. Avoid repeated freeze-thaw cycles.
RefSeq:	<a href="#">NP_054798</a>
Locus ID:	28999



[View online »](#)

UniProt ID: [Q9UIH9](#)

RefSeq Size: 2539

Cytogenetics: 3q21.3

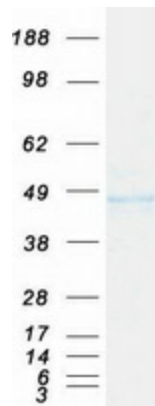
RefSeq ORF: 1248

Synonyms: KKLf

**Summary:** Transcriptional regulator that binds to the GA element of the CLCNKA promoter. Binds to the KCNIP2 promoter and regulates KCNIP2 circadian expression in the heart (By similarity). Is a repressor of CCN2 expression, involved in the control of cardiac fibrosis. It is also involved in the control of cardiac hypertrophy acting through the inhibition of MEF2A and GATA4 (By similarity). Involved in podocyte differentiation (By similarity). Inhibits MYOCD activity. Is a negative regulator of TP53 acetylation. Inhibits NF-kappa-B activation through repression of EP300-dependent RELA acetylation.[UniProtKB/Swiss-Prot Function]

**Protein Families:** Transcription Factors

### Product images:



Coomassie blue staining of purified KLF15 protein (Cat# [TP307523]). The protein was produced from HEK293T cells transfected with KLF15 cDNA clone (Cat# [RC207523]) using MegaTran 2.0 (Cat# [TT210002]).