

## Product datasheet for TP307469

### CCDC82 (NM\_024725) Human Recombinant Protein

#### Product data:

Product Type:	Recombinant Proteins
Description:	Recombinant protein of human coiled-coil domain containing 82 (CCDC82), 20 µg
Species:	Human
Expression Host:	HEK293T
Expression cDNA Clone or AA Sequence:	>RC207469 protein sequence Red=Cloning site Green=Tags(s)

MIHVRRHETRNRNSKSHVPEQKSRVDWRRTRKRSSISQLLDSDEELDSEEFDSDEELDSDEFENDEELDSN  
KGPDCNKTPGSERELNLSKIQSEGNDKCLINSNGSTYEEETNKIKHRNIDLQDQEKHLSQEDNDLNKQ  
TGQIIEDDQEKHLSQEDNDLNKQTGQIIEDDLEEDIKRGKRKRLSSVMCDSDSDSDILVRKVGKRP  
RRVVEDEGSSVEMEQTPEKTLAAQKREKLQKLKELSKQRQRSSGRDFEDSEKESCPSDEVDEEEE  
EDNYEDEDGDDYIIDDVQDEEGDEENKNQQGEKLTTSQLKLVKRNLSYFSFDHYTHFERVVKALLIN  
ALDESFLGTLTDGTRQKSYAKDMLTSLHYLDNRFVQPRLESLVSRSRWKEQYKERVENYSNVSIIHLKNPE  
NCSCQACGLHRYCKYSVHLSGELYNTRTMQIDNFM SHDKQVFTVGRICASRTRIYHKLKHKFKLYQEC  
TIAMTEEVEDEQVKETVERIFRRSKENGWIKEKYGQLEEYLNFADYFQEEKFEL

TRTRPLEQKLISEEDLAANDILDYKDDDDKV

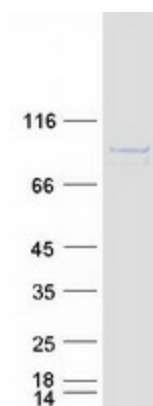
Tag:	C-Myc/DDK
Predicted MW:	63.8 kDa
Concentration:	>0.05 µg/µL as determined by microplate BCA method
Purity:	> 80% as determined by SDS-PAGE and Coomassie blue staining
Buffer:	25 mM Tris-HCl, 100 mM glycine, pH 7.3, 10% glycerol
Preparation:	Recombinant protein was captured through anti-DDK affinity column followed by conventional chromatography steps.
Note:	For testing in cell culture applications, please filter before use. Note that you may experience some loss of protein during the filtration process.
Storage:	Store at -80°C.
Stability:	Stable for 12 months from the date of receipt of the product under proper storage and handling conditions. Avoid repeated freeze-thaw cycles.



[View online »](#)

RefSeq: [NP\\_079001](#)  
Locus ID: 79780  
UniProt ID: [Q8N450](#)  
RefSeq Size: 2746  
Cytogenetics: 11q21  
RefSeq ORF: 1632  
Synonyms: HSPC048

### Product images:



Coomassie blue staining of purified CCDC82 protein (Cat# TP307469). The protein was produced from HEK293T cells transfected with CCDC82 cDNA clone (Cat# [RC207469]) using MegaTran 2.0 (Cat# [TT210002]).