

Product datasheet for **TP307468M**

C16orf44 (KLHL36) (NM_024731) Human Recombinant Protein

Product data:

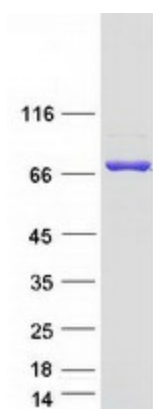
Product Type:	Recombinant Proteins
Description:	Recombinant protein of human kelch-like 36 (Drosophila) (KLHL36), 100 µg
Species:	Human
Expression Host:	HEK293T
Expression cDNA Clone or AA Sequence:	>RC207468 protein sequence Red =Cloning site Green =Tags(s)
	<p>MMEGSRQTRVSRPYKISESSKVYRWADHSSTVLQRLNEQRLRGLFCDVVLVADEQRVPAHRNLLAVCS DYNFNSMFTIGMREAFQKEVELIGASYIGLKAVWDFLYGGELVLDGGNIDYVLETAHLLQIWTWDFCCEYLE QEVSEDNLYLQELASIYSLKRLDAFIDGFILNHFGTLSFTPDFLQNVSMQKLCVYLSSEVQRECEHDL LQAALQWLTQQPEREAHARQVLENIHFPLIPKNDLLHRVKPAVCSLLPKEANCEGFIEEAVRYHNNLAAQ PVMQTKRTALRTNQRLLFVGGEVSERCLELSDDTCYLDAKSEQWVKETPLPARRSHHCVAVLGGFIFIA GGFSRDNGGDAASNLLYRYDPRCKQWIKVASMNQRRVDFYLASIEDMLVAIGGRNENGALSSVETYS PKTDSWSYVAGLPRFTYGHAGTIYKDFVYISGGHDYQIGPYRKNLLCYDHRTDVEERRPMTTARG WHSMCSLGDSIYSIGGSDDNIESMERFDVLGVEAYSPQCQNWTRVAPLLHANSESGVAVWEGRIYILGGYS WENTA FSKTVQVYDREADKWSRGVDLPKAIAGGSACVCALEPRPEDKKKKGGKGRHQDRGQ</p> <p>TRTRPLEQKLISEEDLAANDILDYKDDDDKV</p>
Tag:	C-Myc/DDK
Predicted MW:	69.7 kDa
Concentration:	>0.05 µg/µL as determined by microplate BCA method
Purity:	> 80% as determined by SDS-PAGE and Coomassie blue staining
Buffer:	25 mM Tris-HCl, 100 mM glycine, pH 7.3, 10% glycerol
Preparation:	Recombinant protein was captured through anti-DDK affinity column followed by conventional chromatography steps.
Note:	For testing in cell culture applications, please filter before use. Note that you may experience some loss of protein during the filtration process.
Storage:	Store at -80°C.



[View online »](#)

Stability:	Stable for 12 months from the date of receipt of the product under proper storage and handling conditions. Avoid repeated freeze-thaw cycles.
RefSeq:	NP_079007
Locus ID:	79786
UniProt ID:	Q8N4N3
RefSeq Size:	2211
Cytogenetics:	16q24.1
RefSeq ORF:	1848
Synonyms:	C16orf44
Summary:	Probable substrate-specific adapter of an E3 ubiquitin-protein ligase complex which mediates the ubiquitination and subsequent proteasomal degradation of target proteins. [UniProtKB/Swiss-Prot Function]

Product images:



Coomassie blue staining of purified KLHL36 protein (Cat# [TP307468]). The protein was produced from HEK293T cells transfected with KLHL36 cDNA clone (Cat# [RC207468]) using MegaTran 2.0 (Cat# [TT210002]).