

## Product datasheet for **TP307468L**

### **C16orf44 (KLHL36) (NM\_024731) Human Recombinant Protein**

#### Product data:

**Product Type:** Recombinant Proteins

**Description:** Recombinant protein of human kelch-like 36 (Drosophila) (KLHL36), 1 mg

**Species:** Human

**Expression Host:** HEK293T

**Expression cDNA Clone or AA Sequence:** >RC207468 protein sequence  
**Red**=Cloning site **Green**=Tags(s)

MMEGSRQTRVSRPYKISESSKVYRWADHSSTVLQRLNEQLRGLFCDVWLVADEQRVPAHRNLLAVCS  
DYNFNSMFTIGMREAFQKEVELIGASYIGLKAVWDFLYGGELVLDGGNIDYVLETAHLLQIWTWDFCCEYLE  
QEVSEDNLYLQELASIYSLKRLDAFIDGFILNHFGTLSFTPDFLQNVSMQKLCVYLSSEVQRECEHDL  
LQAALQWLTQQPEREAHARQVLENIHFPLIPKNDLLHRVKPAVCSLLPKEANCEGFIEEAVRYHNNLAAQ  
PVMQTKRTALRTNQRLLFVGGEVSERCLELSDDTCYLDAKSEQWVKETPLPARRSHHCVAVLGGFIFIA  
GGFSFRDNGGDAASNLLYRYDPRCKQWIKVASMNQRRVDFYLASIEDMLVAIGGRNENGALSSVETYS  
PKTDSWSYVAGLPRFTYGHAGTIYKDFVYISGGHDYQIGPYRKNLLCYDHRTDVEERRPMTTARGW  
HSMCSLGDSIYSIGGSDDNIESMERFDVLGVEAYSPQCQNWTRVAPLLHANSESGVAVWEGRIYILGGYS  
WENTA FSKTVQVYDREADKWSRGVDLPKAIAGGSACVCALEPRPEDKKKKGGKGRHQDRGQ

**TRTRPLEQKLISEEDLAANDILDYKDDDDKV**

**Tag:** C-Myc/DDK

**Predicted MW:** 69.7 kDa

**Concentration:** >0.05 µg/µL as determined by microplate BCA method

**Purity:** > 80% as determined by SDS-PAGE and Coomassie blue staining

**Buffer:** 25 mM Tris-HCl, 100 mM glycine, pH 7.3, 10% glycerol

**Preparation:** Recombinant protein was captured through anti-DDK affinity column followed by conventional chromatography steps.

**Note:** For testing in cell culture applications, please filter before use. Note that you may experience some loss of protein during the filtration process.

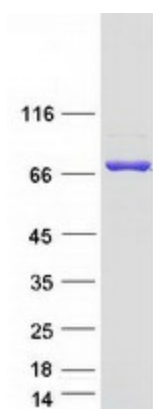
**Storage:** Store at -80°C.



[View online »](#)

Stability:	Stable for 12 months from the date of receipt of the product under proper storage and handling conditions. Avoid repeated freeze-thaw cycles.
RefSeq:	<a href="#">NP_079007</a>
Locus ID:	79786
UniProt ID:	<a href="#">Q8N4N3</a>
RefSeq Size:	2211
Cytogenetics:	16q24.1
RefSeq ORF:	1848
Synonyms:	C16orf44
Summary:	Probable substrate-specific adapter of an E3 ubiquitin-protein ligase complex which mediates the ubiquitination and subsequent proteasomal degradation of target proteins. [UniProtKB/Swiss-Prot Function]

### Product images:



Coomassie blue staining of purified KLHL36 protein (Cat# [TP307468]). The protein was produced from HEK293T cells transfected with KLHL36 cDNA clone (Cat# [RC207468]) using MegaTran 2.0 (Cat# [TT210002]).