

Product datasheet for TP307465L

RUFY1 (NM_001040451) Human Recombinant Protein

Product data:

Product Type:	Recombinant Proteins
Description:	Recombinant protein of human RUN and FYVE domain containing 1 (RUFY1), transcript variant 2, 1 mg
Species:	Human
Expression Host:	HEK293T
Expression cDNA	>RC207465 protein sequence
Clone or AA Sequence:	Red=Cloning site Green=Tags(s)

MMEERANLMHMMKLSIKVLLQSALSLSGRSLDADHAPLQQFFVWMEHCLKHGLKVKKSFQGNKSFSGPLE
LVEKLCPEASDIATSVRNLPELKTAVGRGRAWLYLALMQKKLADYLVKVLIDNKHLLSEFYEPALMMEEE
GMVIVGLLVGLNVLDANLCLKGEDLDSQVGVDFSLYLKDVQDLDDGGKEHERITDVLDQKNYVEELNRHL
SCTVGDQLQTKIDGLEKTNSKLQEELSAATDRICSLQEEQQQLREQNELIRERSEKSVEITKQDTKVELET
YKQTRQGLDEMYSDVWKQLKEEKKVRLLEKELELQIGMKTEMEIAMKLEKDTHEKQDTLVALRQQLEE
VKAINLQMFHKAQNAESSLQQKNEAITSFEGKTNQVMSSMKQMEERLQHSEARQGAEEERSHKLQQLGG
RIGALQLQLSHEQCSLEKELKSEKEQRQALQRELQHEKDTSSLLRMELQQVEGLKKELELQDEKAE
LQKICEEQEQALQEMGLHLSQSKLMEDIKEVNQALKGHAWLKDDDEATHCRQCEKFSISRRKHHCRCNG
HIFCNTCSSNELALPSYPKPVVCDSCHTLLLQRCSSSTAS

TRTRPLEQKLISEEDLAANDILDYKDDDDKV

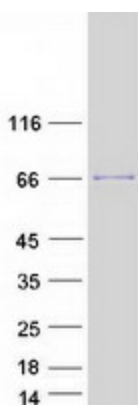
Tag:	C-Myc/DDK
Predicted MW:	68.9 kDa
Concentration:	>0.05 µg/µL as determined by microplate BCA method
Purity:	> 80% as determined by SDS-PAGE and Coomassie blue staining
Buffer:	25 mM Tris-HCl, 100 mM glycine, pH 7.3, 10% glycerol
Preparation:	Recombinant protein was captured through anti-DDK affinity column followed by conventional chromatography steps.
Note:	For testing in cell culture applications, please filter before use. Note that you may experience some loss of protein during the filtration process.
Storage:	Store at -80°C.



[View online »](#)

Stability:	Stable for 12 months from the date of receipt of the product under proper storage and handling conditions. Avoid repeated freeze-thaw cycles.
RefSeq:	NP_001035541
Locus ID:	80230
UniProt ID:	Q96T51 , A8K7B1
RefSeq Size:	2674
Cytogenetics:	5q35.3
RefSeq ORF:	1800
Synonyms:	RABIP4; ZFYVE12
Summary:	This gene encodes a protein that contains a RUN domain and a FYVE-type zinc finger domain. The encoded protein binds to phosphatidylinositol-3-phosphate (PI3P) and plays a role in early endosomal trafficking, tethering and fusion through interactions with small GTPases including Rab4, Rab5 and Rab14. Alternatively spliced transcript variants encoding multiple isoforms have been observed for this gene. [provided by RefSeq, Dec 2011]
Protein Pathways:	Endocytosis

Product images:



Coomassie blue staining of purified RUFY1 protein (Cat# [TP307465]). The protein was produced from HEK293T cells transfected with RUFY1 cDNA clone (Cat# [RC207465]) using MegaTran 2.0 (Cat# [TT210002]).