

Product datasheet for **TP307461L**

EGFL8 (NM_030652) Human Recombinant Protein

Product data:

Product Type: Recombinant Proteins

Description: Recombinant protein of human EGF-like-domain, multiple 8 (EGFL8), 1 mg

Species: Human

Expression Host: HEK293T

Expression cDNA >RC207461 protein sequence

Clone or AA **Red**=Cloning site **Green**=Tags(s)

Sequence:

MGSRAELCTLLGGFSFLLLLIPGEGAKGGSLRESQGVCSKQTLVPLHYNESYSQPVKPYLTLCAARRI
CSTYRTMYRVMWREVRREVQQTHAVCCQGWKKRHPGALTCEAICAKPCLNGGVCVRPDQCECAPGWGGKH
CHVDVDECRTSITLCSHHCFNTAGSFTCGCPHDLVLGVDGRTCEGSPPEPPTSASILSVAVREAEKDERA
LKQEIHELGRRLERLEQWAGQAGAWVRAVLPVPPEELQPEQVAELWGRGDRIESLSDQVLLLQERLGACS
CEDNSLGLGVNHR

TRTRPLEQKLISEEDLAANDILDYKDDDDKV

Tag: C-Myc/DDK

Predicted MW: 32.1 kDa

Concentration: >0.05 µg/µL as determined by microplate BCA method

Purity: > 80% as determined by SDS-PAGE and Coomassie blue staining

Buffer: 25 mM Tris-HCl, 100 mM glycine, pH 7.3, 10% glycerol

Preparation: Recombinant protein was captured through anti-DDK affinity column followed by conventional chromatography steps.

Note: For testing in cell culture applications, please filter before use. Note that you may experience some loss of protein during the filtration process.

Storage: Store at -80°C.

Stability: Stable for 12 months from the date of receipt of the product under proper storage and handling conditions. Avoid repeated freeze-thaw cycles.

RefSeq: [NP_085155](#)

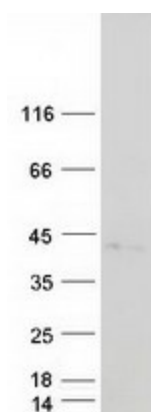
Locus ID: 80864



[View online »](#)

UniProt ID: [Q99944](#), [A0A1U9X7N9](#)
RefSeq Size: 1311
Cytogenetics: 6p21.32
RefSeq ORF: 879
Synonyms: C6orf8; NG3
Protein Families: Secreted Protein

Product images:



Coomassie blue staining of purified EGFL8 protein (Cat# [TP307461]). The protein was produced from HEK293T cells transfected with EGFL8 cDNA clone (Cat# [RC207461]) using MegaTran 2.0 (Cat# [TT210002]).