

Product datasheet for TP307457L

TSPAN10 (NM_031945) Human Recombinant Protein

Product data:

Product Type: Recombinant Proteins
Description: Recombinant protein of human tetraspanin 10 (TSPAN10), 1 mg
Species: Human
Expression Host: HEK293T
Expression cDNA Clone or AA Sequence: >RC207457 protein sequence
Red=Cloning site Green=Tags(s)

MEEGERSPLLSQETAGQKPLSVHRPPTSGCLGPVPREDQAEAWGCSCCPPETKHQALSGTPKKGPAAPSL
 PGSSCVKYLIFLSNFPFLLGLLALAIGLWGLAVKGSLSGDLGGPLPTDPMGLALGGLVSAASLAGCL
 GALCENTCLLRGFSGGILAFVLVLEAVAGALVVALWGPLQDSLEHTLRVAIAHYQDDPDLRFLLDQVQLGL
 RCCGAASYQDWQQNLYFNCSSPGVQACSLPASCCIDPREDGASVNDQCGFVLRDADAAQRVVYLEGCG
 PPLRRWLRANLAASGGYAIWVLLQGAELLAARLLGALAARSGAAYGPGARGEDRAGPQSPSPGAPPAA
 KPARG

TRTRPLEQKLISEEDLAANDILDYKDDDDKV

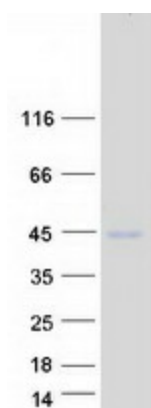
Tag: C-Myc/DDK
Predicted MW: 36.5 kDa
Concentration: >0.05 µg/µL as determined by microplate BCA method
Purity: > 80% as determined by SDS-PAGE and Coomassie blue staining
Buffer: 25 mM Tris-HCl, 100 mM glycine, pH 7.3, 10% glycerol
Preparation: Recombinant protein was captured through anti-DDK affinity column followed by conventional chromatography steps.
Note: For testing in cell culture applications, please filter before use. Note that you may experience some loss of protein during the filtration process.
Storage: Store at -80°C.
Stability: Stable for 12 months from the date of receipt of the product under proper storage and handling conditions. Avoid repeated freeze-thaw cycles.
RefSeq: [NP_114151](#)
Locus ID: 83882



[View online »](#)

| | |
|-------------------|--|
| UniProt ID: | Q9H1Z9 |
| RefSeq Size: | 1659 |
| Cytogenetics: | 17q25.3 |
| RefSeq ORF: | 1065 |
| Synonyms: | OOSP |
| Summary: | Regulates maturation of the transmembrane metalloprotease ADAM10.[UniProtKB/Swiss-Prot Function] |
| Protein Families: | Transmembrane |

Product images:



Coomassie blue staining of purified TSPAN10 protein (Cat# [TP307457]). The protein was produced from HEK293T cells transfected with TSPAN10 cDNA clone (Cat# [RC207457]) using MegaTran 2.0 (Cat# [TT210002]).