

Product datasheet for **TP307454L**

CAMK2D (NM_172127) Human Recombinant Protein

Product data:

Product Type: Recombinant Proteins

Description: Recombinant protein of human calcium/calmodulin-dependent protein kinase II delta (CAMK2D), transcript variant 1, 1 mg

Species: Human

Expression Host: HEK293T

Expression cDNA Clone or AA Sequence: >RC207454 protein sequence
Red=Cloning site **Green**=Tags(s)

MASTTTCTRFTDEYQLFEELGKGAFSVVRRCKIPTGQEYAAKIINTKKLSARDHQKLEREARICRLLKH
PNIVRLHDSISEEGFHYLVFDLVTGGELFEDIVAREYYSEADASHCIQQILESVDNHCHLNGIVHRDLKPE
NLLASKSKGAAVKLADFLAIEVQGDQQAQWFGAGTPGYLSPEVLRKDPYKGPVDMWACGVILYILLVG
YPPFWEDEDQHRLYQQIKAGAYDFPSPEWDTVTPEAKDLINKMLTINPAKRITASEALKHPWICQRSTVAS
MMHRQETVDCLKKFNARRKLGAILTTMLATRNFSAAKSLKKPDGVKESTESSNTTIEDVDKARKQEI
IKVTEQLIEAINNGDFEAYTKICDPGLTAFEPEALGNLVEGMDFHRFYFENALSKSNKPIHTIILNPHVH
LVGDDAACIAYIRLTQYMDGSGMPKTMQSEETRVWHRRDGKWQNVHFHRSQSPTVPIK

TRTRPLEQKLISEEDLAANDILDYKDDDDKV

Tag: C-Myc/DDK

Predicted MW: 53.9 kDa

Concentration: >0.05 µg/µL as determined by microplate BCA method

Purity: > 80% as determined by SDS-PAGE and Coomassie blue staining

Buffer: 25 mM Tris-HCl, 100 mM glycine, pH 7.3, 10% glycerol

Preparation: Recombinant protein was captured through anti-DDK affinity column followed by conventional chromatography steps.

Note: For testing in cell culture applications, please filter before use. Note that you may experience some loss of protein during the filtration process.

Storage: Store at -80°C.

Stability: Stable for 12 months from the date of receipt of the product under proper storage and handling conditions. Avoid repeated freeze-thaw cycles.



[View online »](#)

RefSeq: [NP_742125](#)

Locus ID: 817

UniProt ID: [Q13557](#), [A8MVS8](#)

RefSeq Size: 5820

Cytogenetics: 4q26

RefSeq ORF: 1434

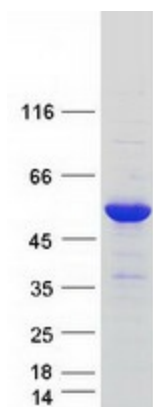
Synonyms: CAMKD

Summary: The product of this gene belongs to the serine/threonine protein kinase family and to the Ca(2+)/calmodulin-dependent protein kinase subfamily. Calcium signaling is crucial for several aspects of plasticity at glutamatergic synapses. In mammalian cells, the enzyme is composed of four different chains: alpha, beta, gamma, and delta. The product of this gene is a delta chain. Alternative splicing results in multiple transcript variants encoding distinct isoforms. Distinct isoforms of this chain have different expression patterns.[provided by RefSeq, Nov 2008]

Protein Families: Druggable Genome, Protein Kinase

Protein Pathways: Calcium signaling pathway, ErbB signaling pathway, Glioma, GnRH signaling pathway, Long-term potentiation, Melanogenesis, Neurotrophin signaling pathway, Olfactory transduction, Oocyte meiosis, Wnt signaling pathway

Product images:



Coomassie blue staining of purified CAMK2D protein (Cat# [TP307454]). The protein was produced from HEK293T cells transfected with CAMK2D cDNA clone (Cat# [RC207454]) using MegaTran 2.0 (Cat# [TT210002]).