

## Product datasheet for **TP307444L**

### CaMKI gamma (CAMK1G) (NM\_020439) Human Recombinant Protein

#### Product data:

Product Type:	Recombinant Proteins
Description:	Recombinant protein of human calcium/calmodulin-dependent protein kinase IG (CAMK1G), 1 mg
Species:	Human
Expression Host:	HEK293T
Expression cDNA Clone or AA Sequence:	>RC207444 protein sequence <b>Red</b> =Cloning site <b>Green</b> =Tags(s)

MGRKEEDDCSSWKKQTTNIRKTFIFMEVLGSGAFSEVFLVKQRLTGKLFALKCIKKSPAFRDSSLENEIA  
VLKKIKHENIVTLEDIYESTTHYYLVMQLVSGGELFDRILERGVYTEKASLVIQQVLSAVKYLHENGIV  
HRDLKPENLLYLTPEENSKIMITDFGLSKMEQNGIMSTACGTPGYVAPEVLAQKPYSKAVDCWSIGVITY  
ILLCGYPPFYEETESKLFEKIKEGYEFESPFWDDISESAKDFICHILLEKDPNERYTCEKALSHPWIDGN  
TALHRDIYPSVSLQIQKNFAKSKWRQAFNAAAVVHHMRKLHMNLHSPGVRPEVENRPPETQASSTRPSS  
PEITITEAPVLDHSVALPALTQLPCQHGRRPTAPGGRLNCLVNGSLHISSSLVPMHQGSLAAGPCGCCS  
SCLNIGSKGSSYCEPTLLKKANKKQNFKSEVMVPVKASGSSHCRAQTGVCLIM

**TRTRPLEQKLISEEDLAANDILDYKDDDDKV**

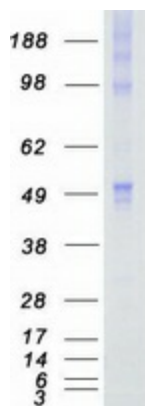
Tag:	C-Myc/DDK
Predicted MW:	52.9 kDa
Concentration:	>0.05 µg/µL as determined by microplate BCA method
Purity:	> 80% as determined by SDS-PAGE and Coomassie blue staining
Buffer:	25 mM Tris-HCl, 100 mM glycine, pH 7.3, 10% glycerol
Preparation:	Recombinant protein was captured through anti-DDK affinity column followed by conventional chromatography steps.
Note:	For testing in cell culture applications, please filter before use. Note that you may experience some loss of protein during the filtration process.
Storage:	Store at -80°C.
Stability:	Stable for 12 months from the date of receipt of the product under proper storage and handling conditions. Avoid repeated freeze-thaw cycles.



[View online >](#)

RefSeq:	<a href="#">NP_065172</a>
Locus ID:	57172
UniProt ID:	<a href="#">Q96NX5</a>
RefSeq Size:	2507
Cytogenetics:	1q32.2
RefSeq ORF:	1428
Synonyms:	CLICK3; CLICKIII; dj272L16.1; VWS1
Summary:	This gene encodes a protein similar to calcium/calmodulin dependent protein kinase, however, its exact function is not known. [provided by RefSeq, Jul 2008]
Protein Families:	Druggable Genome, Protein Kinase

### Product images:



Coomassie blue staining of purified CAMK1G protein (Cat# [TP307444]). The protein was produced from HEK293T cells transfected with CAMK1G cDNA clone (Cat# [RC207444]) using MegaTran 2.0 (Cat# [TT210002]).