

Product datasheet for **TP307440**

MPND (NM_032868) Human Recombinant Protein

Product data:

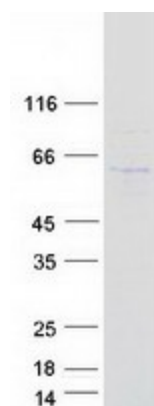
Product Type:	Recombinant Proteins
Description:	Recombinant protein of human MPN domain containing (MPND), 20 µg
Species:	Human
Expression Host:	HEK293T
Expression cDNA Clone or AA Sequence:	>RC207440 representing NM_032868 Red =Cloning site Green =Tags(s)
	<p>MAAPEPLSPAGGAGEEAPEEDEDEAEAEADPERPNAGAGGGRSGGGGSSVSGGGGGGAGAGGCGGPGGAL TRRAVTLRVLLKDALLEPGAGVLSIYYLGKKFLGDLQPDGRIMWQETGQTFNPSAWATHCKKLVNPAKK SGCGWASVKYKGQKLDKYKATWLRHLQLHTPATAADESPASEGEEEEELLMEEEEDVLAVSAEDKSRRP LGKSPSEPAHPEATTPGKRVDKIRVPVRYCMLGSRDLARNPHTLVEVTSFAAINKFQPFNVAVSSNVLF LLDFHSHLTRSEVVGYLGGRWVDVNSQMLTVLRAFPCRSRLGDAETAAAEIEEYQSLFLRGLSLVGWYHS HPHSPALPSLQDIDAQMDYQLRLQGSSNGFQPCALLCSPYYSGNPGPESKISPFWVMPPEMLLVEFYK GSPDLVRLQEPWSQEHTYLDKLIKISLASRTPKDQSLCHVLEQVCGVLKQGS</p> <p>TRRLEQKLISEEDLAANDILDYKDDDDKV</p>
Tag:	C-Myc/DDK
Predicted MW:	50.5 kDa
Concentration:	>0.05 µg/µL as determined by microplate BCA method
Purity:	> 80% as determined by SDS-PAGE and Coomassie blue staining
Buffer:	25 mM Tris-HCl, 100 mM glycine, pH 7.3, 10% glycerol
Preparation:	Recombinant protein was captured through anti-DDK affinity column followed by conventional chromatography steps.
Note:	For testing in cell culture applications, please filter before use. Note that you may experience some loss of protein during the filtration process.
Storage:	Store at -80°C.
Stability:	Stable for 12 months from the date of receipt of the product under proper storage and handling conditions. Avoid repeated freeze-thaw cycles.
RefSeq:	<u>NP_116257</u>



[View online »](#)

Locus ID: 84954
UniProt ID: [Q8N594](#)
RefSeq Size: 1530
Cytogenetics: 19p13.3
RefSeq ORF: 1413
Summary: Probable protease.[UniProtKB/Swiss-Prot Function]
Protein Families: Druggable Genome, Transcription Factors

Product images:



Coomassie blue staining of purified MPND protein (Cat# TP307440). The protein was produced from HEK293T cells transfected with MPND cDNA clone (Cat# [RC207440]) using MegaTran 2.0 (Cat# [TT210002]).