

Product datasheet for **TP307428**

Glutathione Peroxidase 7 (GPX7) (NM_015696) Human Recombinant Protein

Product data:

Product Type: Recombinant Proteins

Description: Recombinant protein of human glutathione peroxidase 7 (GPX7), 20 µg

Species: Human

Expression Host: HEK293T

Expression cDNA Clone or AA Sequence: >RC207428 protein sequence
Red=Cloning site Green=Tags(s)

MVAATVAAAWLLLWAAACAQQEQDFYDFKAVNIRGKLVLSLEKYRGSVSLVNVASECGFTDQHYRALQQL
QRDLGPHHFNVLAFCNQFGQQEPDSNKEIESFARRTYSVSFPMFSKIAVTGTGAHPAFKYLAQTSGKEP
TWNFWKYL VAPDGKVVGAWDPTVSVEEVRPQITALVRKLILLKREDL

TRTRPLEQKLISEEDLAANDILDYKDDDDKV

Tag: C-Myc/DDK

Predicted MW: 20.8 kDa

Concentration: >0.05 µg/µL as determined by microplate BCA method

Purity: > 80% as determined by SDS-PAGE and Coomassie blue staining

Buffer: 25 mM Tris-HCl, 100 mM glycine, pH 7.3, 10% glycerol

Preparation: Recombinant protein was captured through anti-DDK affinity column followed by conventional chromatography steps.

Note: For testing in cell culture applications, please filter before use. Note that you may experience some loss of protein during the filtration process.

Storage: Store at -80°C.

Stability: Stable for 12 months from the date of receipt of the product under proper storage and handling conditions. Avoid repeated freeze-thaw cycles.

RefSeq: [NP_056511](#)

Locus ID: 2882

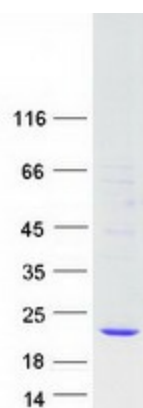
UniProt ID: [Q96SL4](#)

RefSeq Size: 1246



[View online »](#)

Cytogenetics:	1p32.3
RefSeq ORF:	561
Synonyms:	CL683; GPx-7; GPX6; GSHPx-7; NPGPx
Summary:	It protects esophageal epithelia from hydrogen peroxide-induced oxidative stress. It suppresses acidic bile acid-induced reactive oxygen species (ROS) and protects against oxidative DNA damage and double-strand breaks.[UniProtKB/Swiss-Prot Function]
Protein Families:	Druggable Genome, Secreted Protein
Protein Pathways:	Arachidonic acid metabolism, Glutathione metabolism

Product images:

Coomassie blue staining of purified GPX7 protein (Cat# TP307428). The protein was produced from HEK293T cells transfected with GPX7 cDNA clone (Cat# [RC207428]) using MegaTran 2.0 (Cat# [TT210002]).