

Product datasheet for **TP307426M**

CYP2S1 (NM_030622) Human Recombinant Protein

Product data:

Product Type:	Recombinant Proteins
Description:	Recombinant protein of human cytochrome P450, family 2, subfamily S, polypeptide 1 (CYP2S1), 100 µg
Species:	Human
Expression Host:	HEK293T
Expression cDNA	>RC207426 protein sequence
Clone or AA Sequence:	Red=Cloning site Green=Tags(s)

MEATGTWALLLALALLLLTLALSGTRARGHLPPGPTPLPLLGNNLQLRPGALYSGLMRLSKKYGPVFTI
YLGWPWRPVVVLVGQEAVREALGGQAEFFSGRGTVMLEGTFDGHGVFFSNGERWRQLRKFTMLALRDLGM
GKREGEELIQAEARCLVETFQGTGRPFDPSSLQAQATSNVCSLLFGLRFSYEDKEFQAVVRAAGGTLL
GVSSQGGQTYEMFSWFLRPLPGPHKQLLHHVSTLAAFTVRQVQHQGNLDASGPARDLVDAFLLKMAQEE
QNPGEFTNKNMLMTVIYLLFAGTMTVSTTVGYTLTLLMKYPHVQKVVREELNRELGAGQAPSLGDRTRL
PYTDAVLHEAQRLALVPMGIPRTLMTTRFRGYTLPQGTEVFPLLGSILHDPNIFKHPEEFNPDRFLDA
DGRFRKHEAFLPFSLGKRVCLGEGLAKAELFFTTILQAFSLESPCPPDTLSLKPTVSGLFNIPPAFQL
QVRPTDLHSTTQTR

TRTRPLEQKLISEEDLAANDILDYKDDDDKV

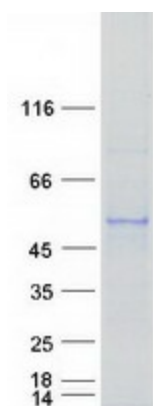
Tag:	C-Myc/DDK
Predicted MW:	55.6 kDa
Concentration:	>0.05 µg/µL as determined by microplate BCA method
Purity:	> 80% as determined by SDS-PAGE and Coomassie blue staining
Buffer:	25 mM Tris-HCl, 100 mM glycine, pH 7.3, 10% glycerol
Preparation:	Recombinant protein was captured through anti-DDK affinity column followed by conventional chromatography steps.
Note:	For testing in cell culture applications, please filter before use. Note that you may experience some loss of protein during the filtration process.
Storage:	Store at -80°C.



[View online »](#)

Stability:	Stable for 12 months from the date of receipt of the product under proper storage and handling conditions. Avoid repeated freeze-thaw cycles.
RefSeq:	NP_085125
Locus ID:	29785
UniProt ID:	Q96SQ9
RefSeq Size:	2657
Cytogenetics:	19q13.2
RefSeq ORF:	1512
Synonyms:	CYPIIS1
Summary:	This gene encodes a member of the cytochrome P450 superfamily of enzymes. The cytochrome P450 proteins are monooxygenases which catalyze many reactions involved in drug metabolism and synthesis of cholesterol, steroids and other lipids. This protein localizes to the endoplasmic reticulum. In rodents, the homologous protein has been shown to metabolize certain carcinogens; however, the specific function of the human protein has not been determined. [provided by RefSeq, Jul 2008]
Protein Families:	Druggable Genome, P450, Transmembrane
Protein Pathways:	Metabolism of xenobiotics by cytochrome P450

Product images:



Coomassie blue staining of purified CYP2S1 protein (Cat# [TP307426]). The protein was produced from HEK293T cells transfected with CYP2S1 cDNA clone (Cat# [RC207426]) using MegaTran 2.0 (Cat# [TT210002]).